

# OTTAWA COUNTY ENGINEERS OFFICE

**REFERENCE NO.** 17-7-14-A  
 NW CORNER POST SECTION 17  
 BENTON TWP.  
**SHEET** 1 OF 1.

**ROUTE:** C-208 ELLISTON-TROWBRIDGE RD.  
 @ T-67 TROWBRIDGE RD.  $\triangle$

**TOWNSHIP:** BENTON

**SECTION:** 17

**T** 7 **NR** 14 **E.**

**NORTHING:**

**EASTING:**

**DATUM:**



**PERSONNEL:**

R. NUHFER, P.S.  
 M. BROUGH  
 K. MOORE  
 R. LAJTI  
 N. SANTOYA

**DATE / WEATHER / TEMP:**

JULY 11, 2002  
 SUNNY  
 78° F

MONUMENT INFORMATION

MONUMENT TYPE: FD BLACK GRANITE STONE  
 ON SURFACE - BELOW: 1.25'  
 LEFT - CL PAV'T - RIGHT:  
 RECTANGULAR STONE: 5" x 12"

SET 3/8" DRILL HOLE IN CENTER OF STONE

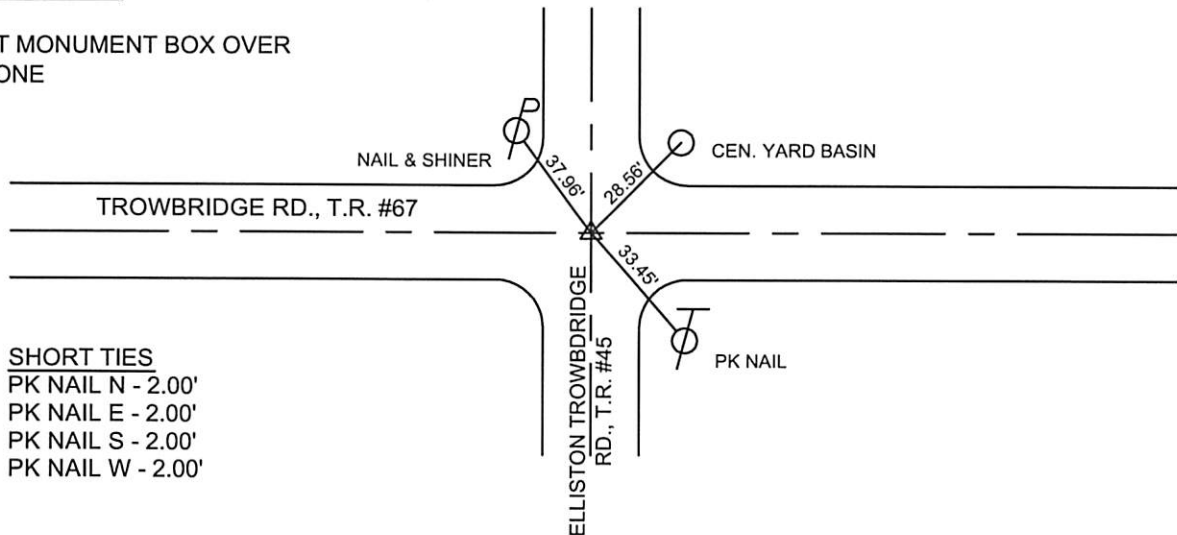


MISC. INFORMATION

FOUND 2" IRON PIPE OVER PIN 4" BELOW  
 SURFACE - REMOVED

JULY 22, 2002

SET MONUMENT BOX OVER  
 STONE



SHORT TIES  
 PK NAIL N - 2.00'  
 PK NAIL E - 2.00'  
 PK NAIL S - 2.00'  
 PK NAIL W - 2.00'