

OTTAWA COUNTY ENGINEERS OFFICE

REFERENCE NO. 15-7-14-G
 SW CORNER POST SECTION 15
 BENTON TWP.
SHEET 1 OF 1.

ROUTE: T-66 MOLINE MARTIN RD. @
 T-21 STANGE RD.

TOWNSHIP: BENTON

SECTION: 15

T 7 **N** **R** 14 **E.**

NORTHING:

EASTING:

DATUM:



PERSONNEL:

M. WITTMAN, P.S.
 M. BROUGH
 R. STONER
 N. SANTOYA
 M. WILKINS

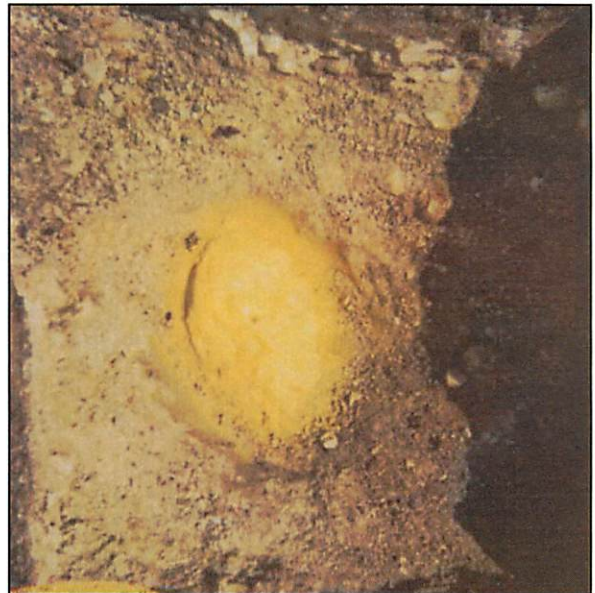
DATE / WEATHER / TEMP:

JULY 17, 2003
 SUNNY
 82° F

MONUMENT INFORMATION

MONUMENT TYPE: FD HARD HEAD STONE
 ON SURFACE - BELOW: 1.25'
 LEFT - CL PAV'T - RIGHT: 5' (T-21)
 FOOTBALL SHAPED STONE: 12" x 9"

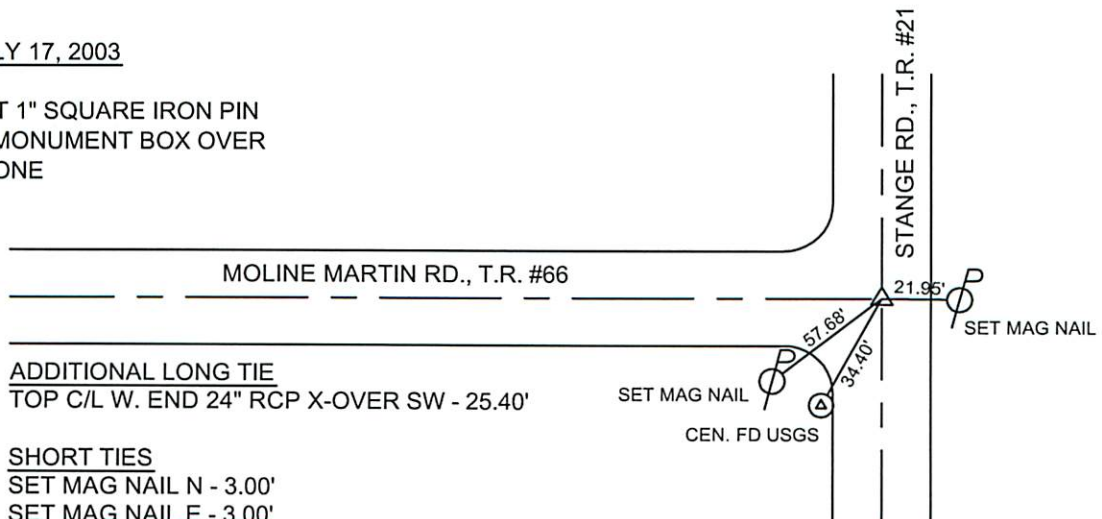
USED FD DRILL HOLE IN STONE.



MISC. INFORMATION

JULY 17, 2003

SET 1" SQUARE IRON PIN
 IN MONUMENT BOX OVER
 STONE



ADDITIONAL LONG TIE
 TOP C/L W. END 24" RCP X-OVER SW - 25.40'

SHORT TIES

SET MAG NAIL N - 3.00'
 SET MAG NAIL E - 3.00'
 SET MAG NAIL S - 3.00'
 SET MAG NAIL W - 3.00'