

# OTTAWA COUNTY ENGINEERS OFFICE

REFERENCE NO. 15-7-14-D  
W QUARTER POST SECTION 15  
BENTON TWP.  
SHEET 1 OF 1.

ROUTE: T-21 STANGE RD..

TOWNSHIP: BENTON

SECTION: 15

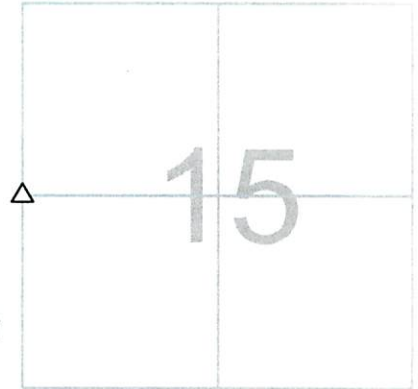
T 7 NR 14 E.

PERSONNEL:  
M. WITTMAN, P.S.  
J. ALLEN  
K. SMITH  
S. ULLRICH

NORTHING:

EASTING:

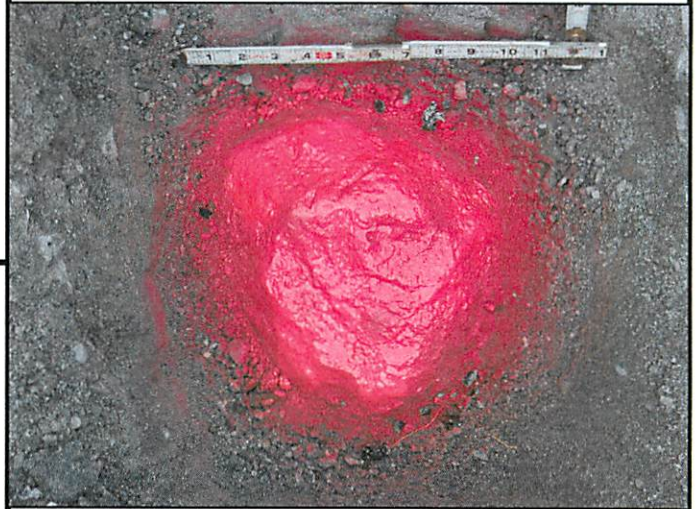
DATUM:



DATE / WEATHER / TEMP:  
JULY 16, 2007  
SUNNY  
79° F

## MONUMENT INFORMATION

MONUMENT TYPE: FD STONE  
ON SURFACE - BELOW: 1.08'  
LEFT - CL PAV'T - RIGHT: 3.60'  
HARDHEAD STONE 9" x 10" W/ DRILL HOLE IN  
DEPRESSION, ENHANCED DRILL HOLE.



## MISC. INFORMATION

JULY 16, 2007

SET 1" SQUARE IRON PIN  
IN MONUMENT BOX OVER  
STONE

