

# OTTAWA COUNTY ENGINEERS OFFICE

REFERENCE NO. 10-7-14-H  
SOUTH QUARTER POST SEC. 10  
BENTON TWP.  
SHEET 1 OF 1.

PERSONNEL:  
M. WITTMAN, P.S.  
J. ALLEN

DATE / WEATHER / TEMP:  
AUGUST 18, 2022  
SUNNY - HUMID  
74° F

ROUTE: T-67 TROWBRIDGE RD.

TOWNSHIP: BENTON

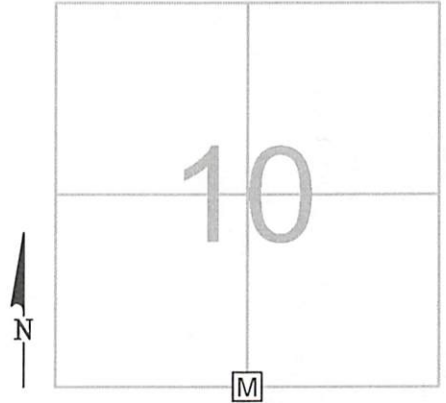
SECTION: 10

T 7 NR 14 E.

NORTHING:

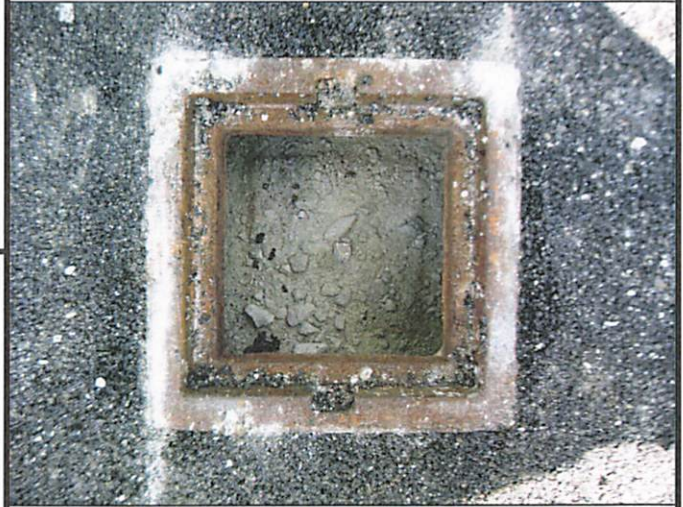
EASTING:

DATUM:



## MONUMENT INFORMATION

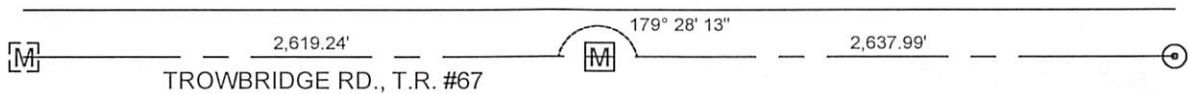
MONUMENT TYPE: FD RAILROAD SPIKE  
ON SURFACE - BELOW: 0.31'  
LEFT - CL PAV'T - RIGHT: 1.25'



## MISC. INFORMATION

FD RAILROAD SPIKE 0.31' BELOW SURFACE, SHOT  
WITH GPS AND DUG FOR STONE. NO STONE  
FOUND. SET 5/8" Ø IRON PIN IN MONUMENT BOX IN  
PLACE OF RAILROAD SPIKE.

AUGUST 18, 2022  
SET 5/8" Ø IRON PIN  
IN MONUMENT BOX



NW CORNER  
SECTION 15  
1" SQ. I PIN IN  
MONUMENT  
BOX

NE CORNER  
SECTION 15  
FD ODOT PK  
NAIL