

OTTAWA COUNTY ENGINEERS OFFICE

REFERENCE NO. 1-7-14-A
 NW CORNER POST SECTION 1
 BENTON TWP.
 SHEET 1 OF 1.

ROUTE: C-22 LICKERT-HARDER RD.
 @ S-2 STATE ROUTE 2

TOWNSHIP: BENTON

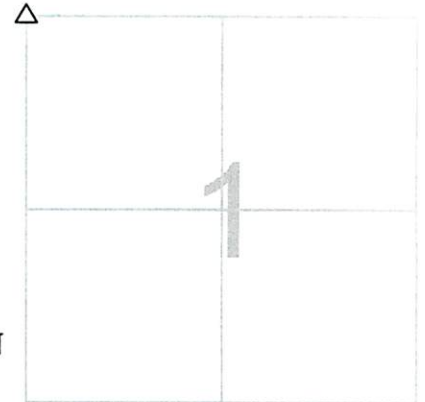
SECTION: 1

T 7 NR 14 E.

NORTHING:

EASTING:

DATUM:



PERSONNEL:

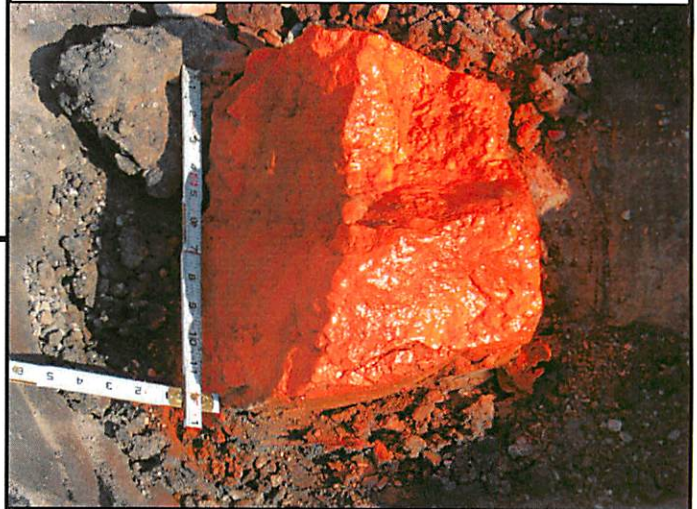
M. WITTMAN, P.S.
 J. ALLEN
 K. SMITH

DATE / WEATHER / TEMP:

AUGUST 28, 2007
 SUNNY
 77° F

MONUMENT INFORMATION

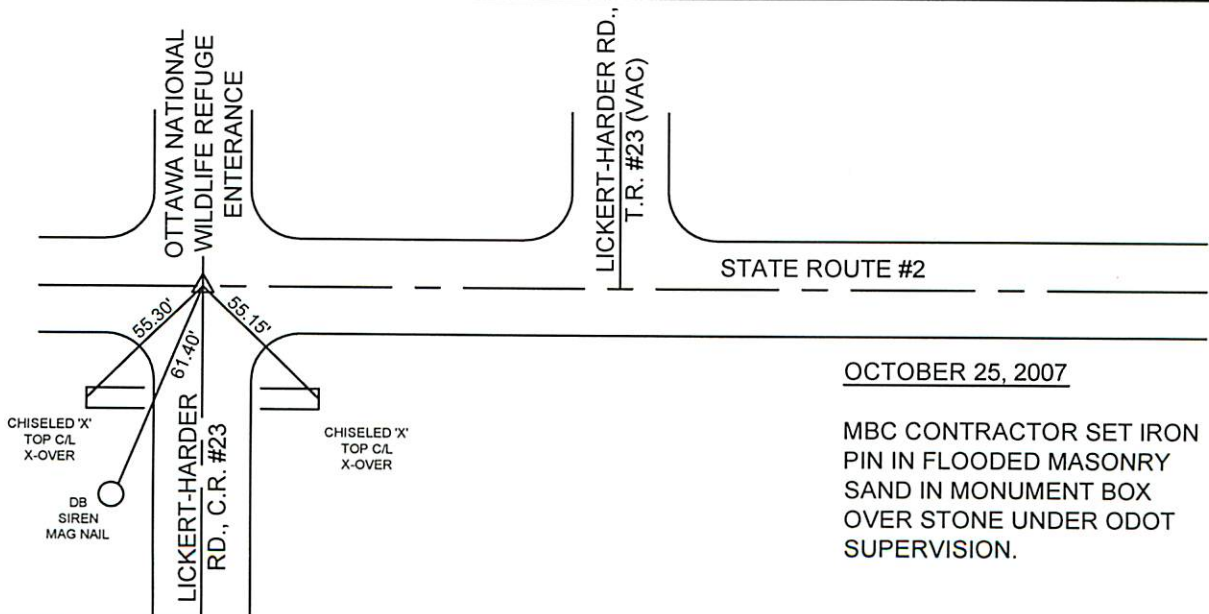
MONUMENT TYPE: FD STONE
 ON SURFACE - BELOW: 2' +/-
 LEFT - CL PAV'T - RIGHT:
 GRANITE STONE 12" X 10" X 7" WITH 9" X 4" X 2"
 CLAY BRICK ON EAST SIDE AND ALSO UNDER
 STONE.



MISC. INFORMATION

STONE WAS LOCATED BY MILLER BROS. CONSTRUCTION WHILE
 EXCAVATING FOR ODOT PROJECT 07-0150. JAN MATERNI - ODOT
 PROJECT MANAGER STATED THAT THERE WAS A PK NAIL ON THE
 SURFACE AT COMMENCEMENT OF EXCAVATION. PER ODOT SURVEY
 CREWS, PK WAS ON N END OF THE E/W CENTERLINE OF THE STONE.
 MBC, INC. FOUND IRON PIN IN MOUNTMENT BOX DURING FUTHER
 EXCAVATION (NO ODOT OR COUNTY RECORD OF THIS BOX). ODOT
 SURVEY CREWS USED GPS TO TIE DOWN LOCATION OF STONE.
 OTTAWA COUNTY CREW VISITED SITE 8-28-07 TO VERIFY, PHOTOGRAPH
 AND TIE DOWN.

THIS IS A CLOSING CORNER



OCTOBER 25, 2007

MBC CONTRACTOR SET IRON
 PIN IN FLOODED MASONRY
 SAND IN MONUMENT BOX
 OVER STONE UNDER ODOT
 SUPERVISION.