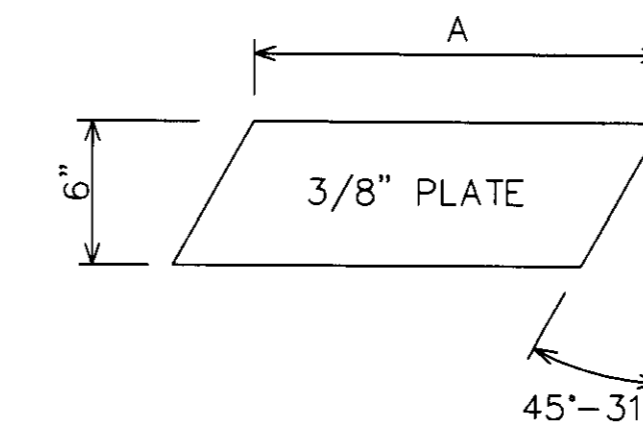
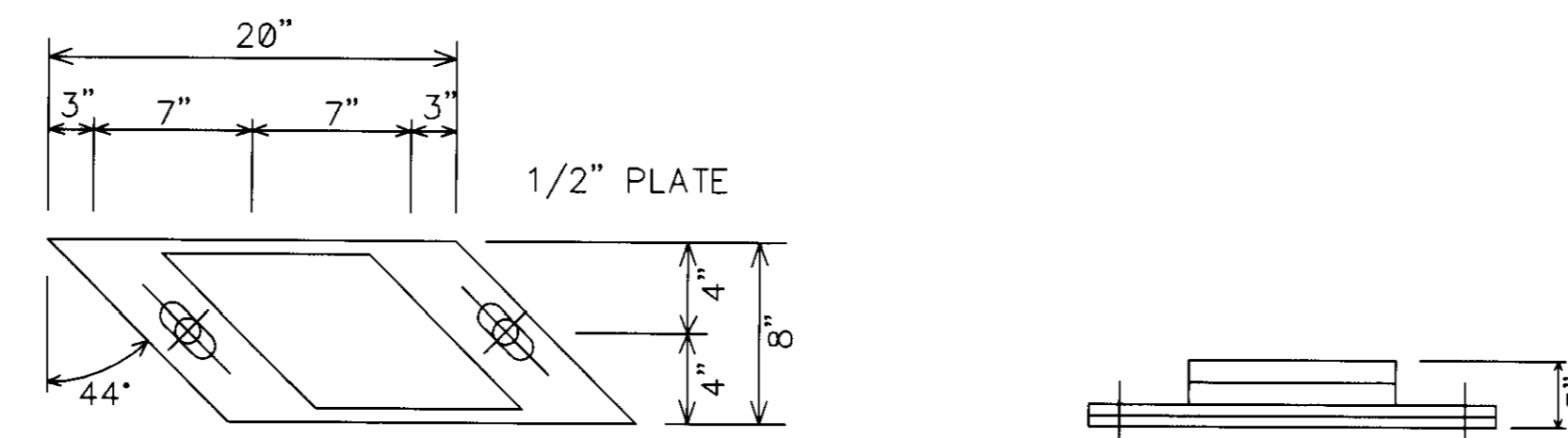


EXPANSION CHANNEL
MC6X15.1
2 REQ'D

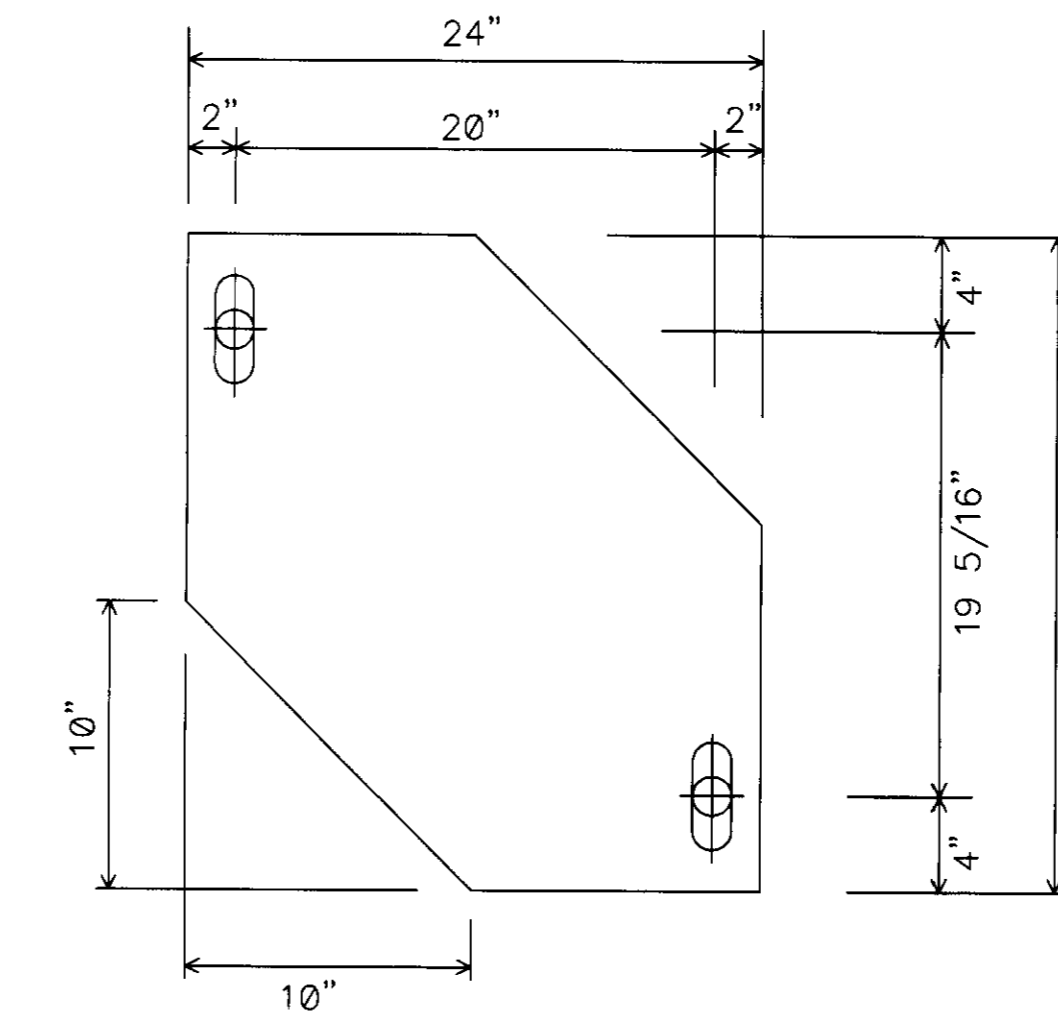


NORTH ABUTMENT EXPANSION CHANNEL PLATES
PLATES A - 4 REQ'D - A = 1'-7 13/16
PLATES B - 12 REQ'D - A = 4'-0



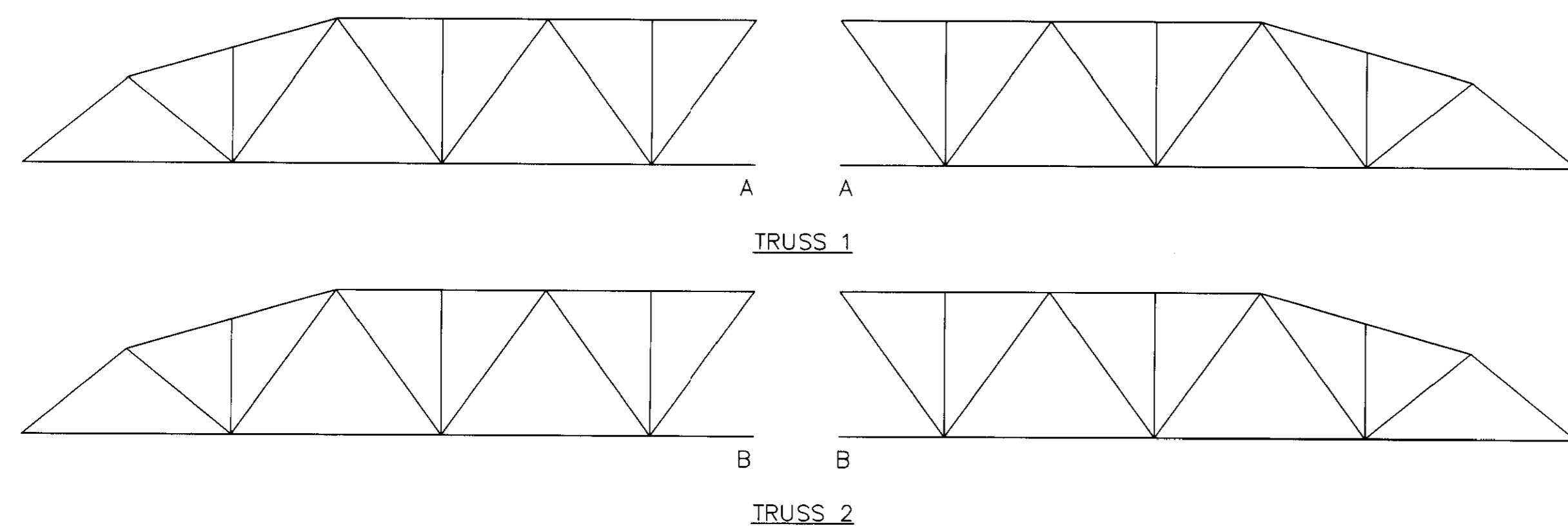
STRINGER BEARING PLATES

- FIXED END**
7 PLATES WITH 1 1/8" ϕ HOLES WITH TWO \mathbb{R} 1" X 7" X 10" SHIMS - TOP PLATES
7 PLATES WITH 1 1/8" ϕ HOLES - BOTTOM PLATES
- EXPANSION END**
7 PLATES WITH 1 1/8" X 3" SLOTTED HOLES WITH TWO \mathbb{R} 1" X 7" X 10" SHIMS - TOP PLATES
7 PLATES WITH 1 1/8" ϕ HOLES - BOTTOM PLATES



TRUSS BEARING PLATES

- FIXED ABUTMENT**
4 - \mathbb{R} 3/4" X 24" X 27 5/16" WITH 1 5/8" ϕ HOLES (TOP & BOTTOM PLATES)
- EXP. ABUTMENT**
2 - \mathbb{R} 3/4" X 24" X 27 5/16" WITH 1 5/8" X 4 1/2" SLOTTED HOLES (TOP PLATES)
2 - BRONZE \mathbb{R} 1/4" X 24" X 27 5/16" WITH 1 5/8" ϕ HOLES (MIDDLE PLATES)
2 - \mathbb{R} 1/2" X 24" X 27 5/16" WITH 1 5/8" ϕ HOLES (BOTTOM PLATES)



TRUSS MARKING DIAGRAM

NOTE: DRAWINGS RELATIVE (DO NOT SCALE)

DATE	REVISIONS	BY	85' TRUSS BRIDGE REHAB. 24' ROADWAY WIDTH STANGE ROAD BRIDGE NO. BEN-21-2.23 BENTON TWP. OTTAWA COUNTY, OHIO			
1	8-14-01 EXP. CHANNEL REDRAWN	SAF	DESIGN SAF	DRAWN SAF	DATE JULY 25, 2001	DRAWING NO. STANGE
			CHECK/DATE	FABRICATOR		
				OHIO BRIDGE		