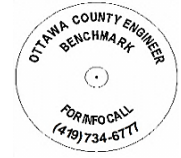


OTTAWA COUNTY BENCHMARK DATA SHEET



BEN 22-6.0

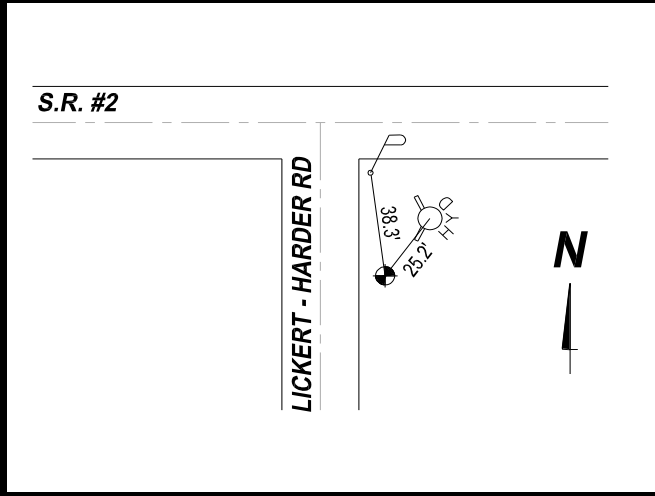
| | | | | |
|-----------------|----------------|-------------------|----------------------|---|
| Township | Section | Town | Range | Type of Monument |
| Benton | 1 | T7N | R14E | 3 1/4" Domed Bronze Disk in Concrete (OCE Spec. BM-1) |
| Set By | Shot By | Calculated | Calculated By | Published |
| OCE / OCHD | J. Allen | March 8, 2012 | M. J. Wittman, P.S. | March 16, 2012 |

Location

East side of Lickert-Harder Rd., T.R. #22 south of State Route #2

| Vertical Control | | |
|-----------------------|---------------|-------------------------------------|
| Vertical Datum | Method | Elevation (U.S. Survey Feet) |
| NAVD 88 | GPS | 574.35 |

| Horizontal Control | | | |
|-------------------------|---------------------|---------------------|----------------|
| Horizontal Datum | Zone | Northing | Easting |
| NAD 83 CORS 96 | OHIO NORTH 3401 | 706,397.091 | 1,776,467.335 |
| Method | Latitude | Longitude | |
| GPS / CORPSCON | 41° 36' 12.34768" N | 83° 12' 07.73367" W | |
| Geoid | Scale Factor | Convergence | |
| GEOID 09 | 0.999982807 | - 00° 27' 40.59542" | |



NOTES:

1. Monument set: August 15, 2011
2. Data Collected: 2-2-12, 2-10-12, 2-24-12