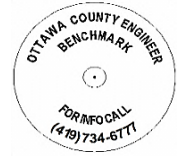


OTTAWA COUNTY BENCHMARK DATA SHEET



BEN 22-2.0

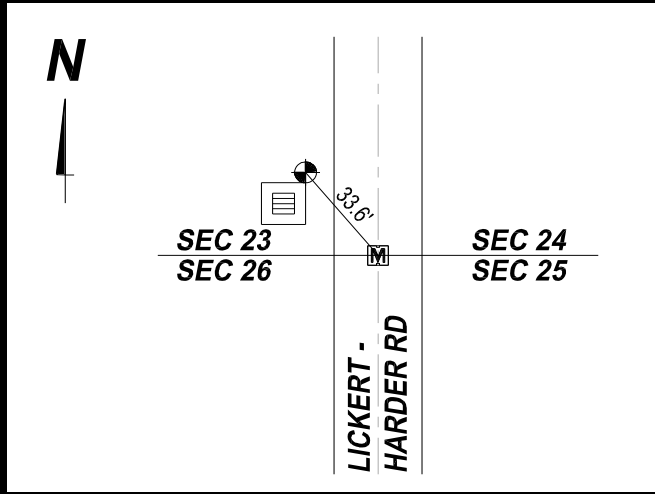
Township	Section	Town	Range	Type of Monument
Benton	26	T7N	R14E	3 1/4" Domed Bronze Disk in Concrete (OCE Spec. BM-1)
Set By	Shot By	Calculated	Calculated By	Published
OCE / OCHD	J. Allen	March 8, 2012	M. J. Wittman, P.S.	March 16, 2012

Location

West side of Lickert-Harder Rd., T.R. #22 south of the Norfolk Southern Railroad (Single Track)

Vertical Control		
Vertical Datum	Method	Elevation (U.S. Survey Feet)
NAVD 88	GPS	588.17

Horizontal Control			
Horizontal Datum	Zone	Northing	Easting
NAD 83 CORS 96	OHIO NORTH 3401	685,401.961	1,776,100.075
Method	Latitude	Longitude	
GPS / CORPSCON	41° 32' 44.89641" N	83° 12' 10.34056" W	
Geoid	Scale Factor	Convergence	
GEOID 09	0.999973908	- 00° 27' 42.30802"	



NOTES:

1. Monument set: August 15, 2011
2. Data Collected: 2-2-12, 2-10-12, 2-24-12