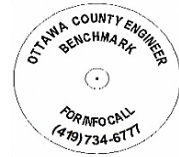




OTTAWA COUNTY BENCHMARK DATA SHEET



BEN 213-7.0

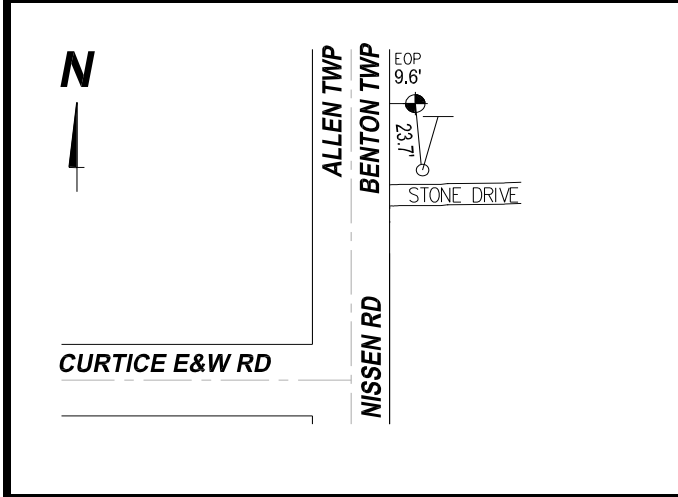
Township	Section	Town	Range	Type of Monument
BENTON	6	T7N	R14E	3 1/4" Domed Bronze Disk in Concrete (OCE Spec. BM-1)
Set By	Shot By	Calculated	Calculated By	Published
OCE / OCHD	J. Allen	March 8, 2012	M. J. Wittman, P.S.	March 16, 2012

Location

East side of Nissen Rd., C.R. #213 north of a stone drive north of Curtice East and West Rd., T.R. #70

Vertical Control		
Vertical Datum	Method	Elevation (U.S. Survey Feet)
NAVD 88	GPS	581.32

Horizontal Control			
Horizontal Datum	Zone	Northing	Easting
NAD 83 CORS 96	OHIO NORTH 3401	712,155.921	1,749,935.930
Method	Latitude	Longitude	
GPS / CORPSCON	41° 37' 06.98494" N	83° 17' 57.64399" W	
Geoid	Scale Factor	Convergence	
GEOID 09	0.999985320	- 00° 31' 30.46912"	



NOTES:

1. Monument set: August 15, 2011
2. Data Collected: 2-2-12, 2-10-12, 2-17-12