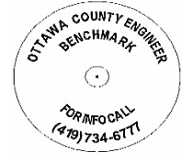


OTTAWA COUNTY BENCHMARK DATA SHEET



BEN 213-5.0

| Township | Section | Town | Range | Type of Monument |
|---------------|----------------|-------------------|----------------------|----------------------------------------------------------|
| BENTON | 6 | T7N | R14E | 3 1/4" Domed Bronze Disk in Concrete (OCE Spec. BM-1) |
| Set By | Shot By | Calculated | Calculated By | Published |
| OCE / OCHD | J. Allen | March 8, 2012 | M. J. Wittman, P.S. | March 16, 2012 |

Location

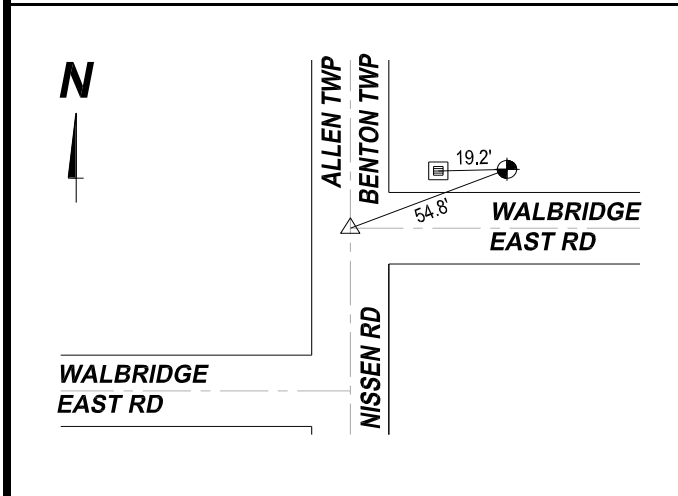
Northeast Corner of Intersection of Nissen Rd., C.R. #213 & Walbridge East Rd., T.R. #68

Vertical Control

| Vertical Datum | Method | Elevation (U.S. Survey Feet) |
|----------------|--------|------------------------------|
| NAVD 88 | GPS | 589.10 |

Horizontal Control

| Horizontal Datum | Zone | Northing | Easting |
|------------------|---------------------|---------------------|---------------|
| NAD 83 CORS 96 | OHIO NORTH 3401 | 701,603.772 | 1,749,839.475 |
| Method | Latitude | Longitude | |
| GPS / CORPSCON | 41° 35' 22.72794" N | 83° 17' 57.64056" W | |
| Geoid | Scale Factor | Convergence | |
| GEOID 09 | 0.999980586 | - 00° 31' 30.46686" | |



- NOTES:**
1. Monument set: August 15, 2011
 2. Data Collected: 2-2-12, 2-10-12, 2-17-12