



# OTTAWA COUNTY BENCHMARK DATA SHEET



## BEN 21-2.0

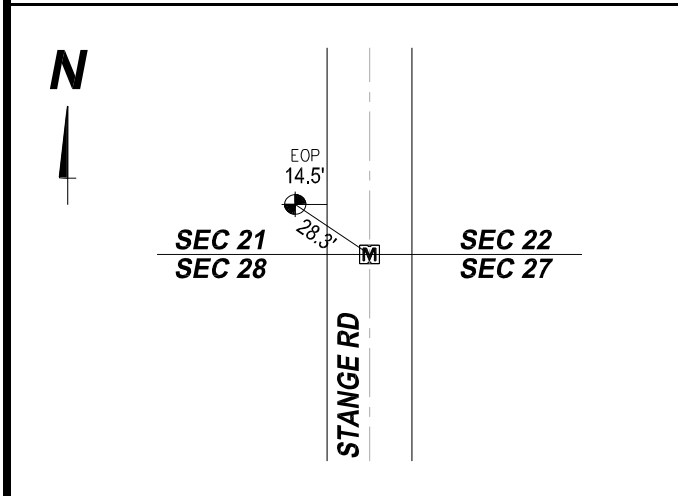
Township	Section	Town	Range	Type of Monument
Benton	21	T7N	R14E	3 1/4" Domed Bronze Disk in Concrete (OCE Spec. BM-1)
<b>Set By</b>	<b>Shot By</b>	<b>Calculated</b>	<b>Calculated By</b>	<b>Published</b>
OCE / OCHD	J. Allen	March 8, 2012	M. J. Wittman, P.S.	March 16, 2012

**Location**

West side of Stange Rd., T.R. #21 northwest of the southwest corner of Section 21, T7N R14E

Vertical Control		
Vertical Datum	Method	Elevation (U.S. Survey Feet)
NAVD 88	GPS	590.89

Horizontal Control			
Horizontal Datum	Zone	Northing	Easting
NAD 83 CORS 96	OHIO NORTH 3401	685,395.844	1,765,533.024
<b>Method</b>	<b>Latitude</b>	<b>Longitude</b>	
GPS / CORPSCON	41° 32' 43.97150" N	83° 14' 29.30553" W	
<b>Geoid</b>	<b>Scale Factor</b>	<b>Convergence</b>	
GEOID 09	0.999973870	- 00° 29' 13.60110"	



**NOTES:**

1. Monument set: August 15, 2011
2. Data Collected: 2-2-12, 2-10-12, 2-24-12