

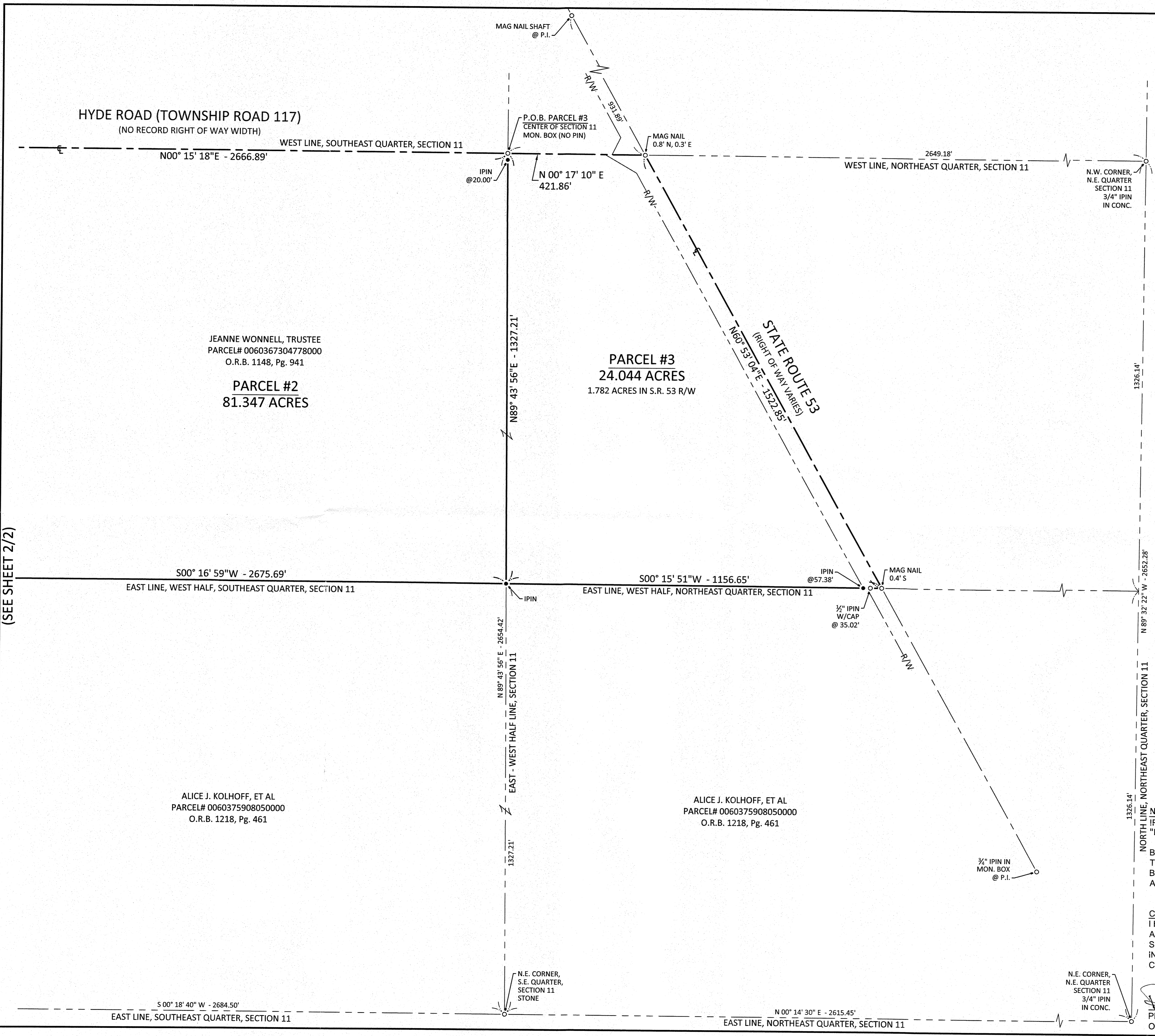
NO	REVISED PER COUNTY MARKUP	REVISION	DATE
1			1/25/17
2			
3			
4			
5			
6			
7			
8			
9			

FOR:
JEANNE WONNELL, TRUSTEE
 PART OF THE EAST HALF, SECTION 11 AND THE
 NORTHEAST QUARTER OF SECTION 14,
 TOWN 6 NORTH, RANGE 16 EAST, BAY TOWNSHIP,
 OTTAWA COUNTY, OHIO

BOUNDARY SURVEY

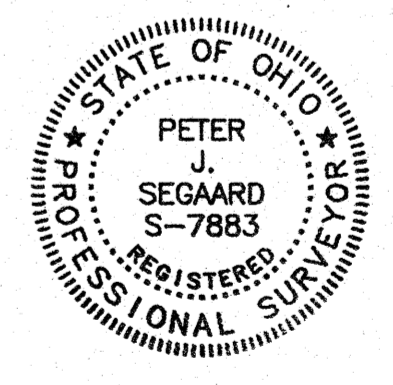
FILE:	BNDY
JOB NO.:	17001-1
DRAWN BY:	KEY
ISSUED:	01/20/2017

1/2



- LEGEND**
- MONUMENT FOUND
 - MONUMENT SET
 - (C) CALCULATED DISTANCE
 - (M) MEASURED DISTANCE
 - (REC) RECORD DISTANCE
 - R/W RIGHT-OF-WAY
 - P.O.B. POINT OF BEGINNING
 - P.O.C. POINT OF COMMENCEMENT

- REFERENCES:**
- COUNTY DEED/OFFICIAL RECORD BOOKS AND PAGES AS SHOWN.
 - ENGINEERS SURVEY VOLUME 3-2-55.
 - ENGINEERS SURVEY VOLUME 4-2-76.
 - ENGINEERS SURVEY VOLUME 4-2-105.
 - ENGINEERS SURVEY VOLUME BAY 13-6-16-00008.
 - ENGINEERS SURVEY VOLUME BAY 13-6-16-00032.
 - ENGINEERS SURVEY VOLUME BAY 13-6-16-00011.
 - ODOT RIGHT OF WAY PLANS OTT-053-00.00-1961.



NOTE:
 IRON PINS SET ARE 5/8" DIAMETER X 30" LONG IRON PINS WITH CAP "DGL-PJS 7883"

BASIS OF BEARINGS:
 THE BEARINGS SHOWN HEREON ARE BASED ON AN ASSUMED BEARING AND ARE FOR THE SOLE PURPOSE OF SHOWING ANGULAR MEASUREMENT.

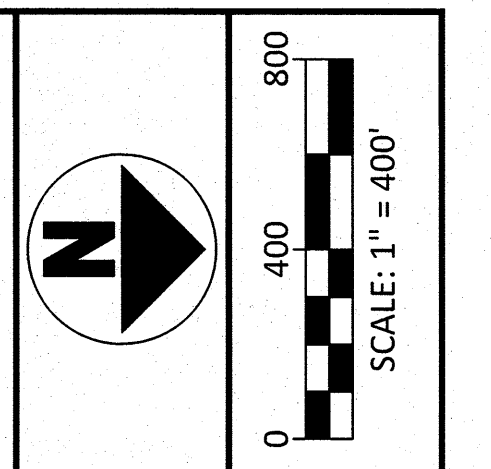
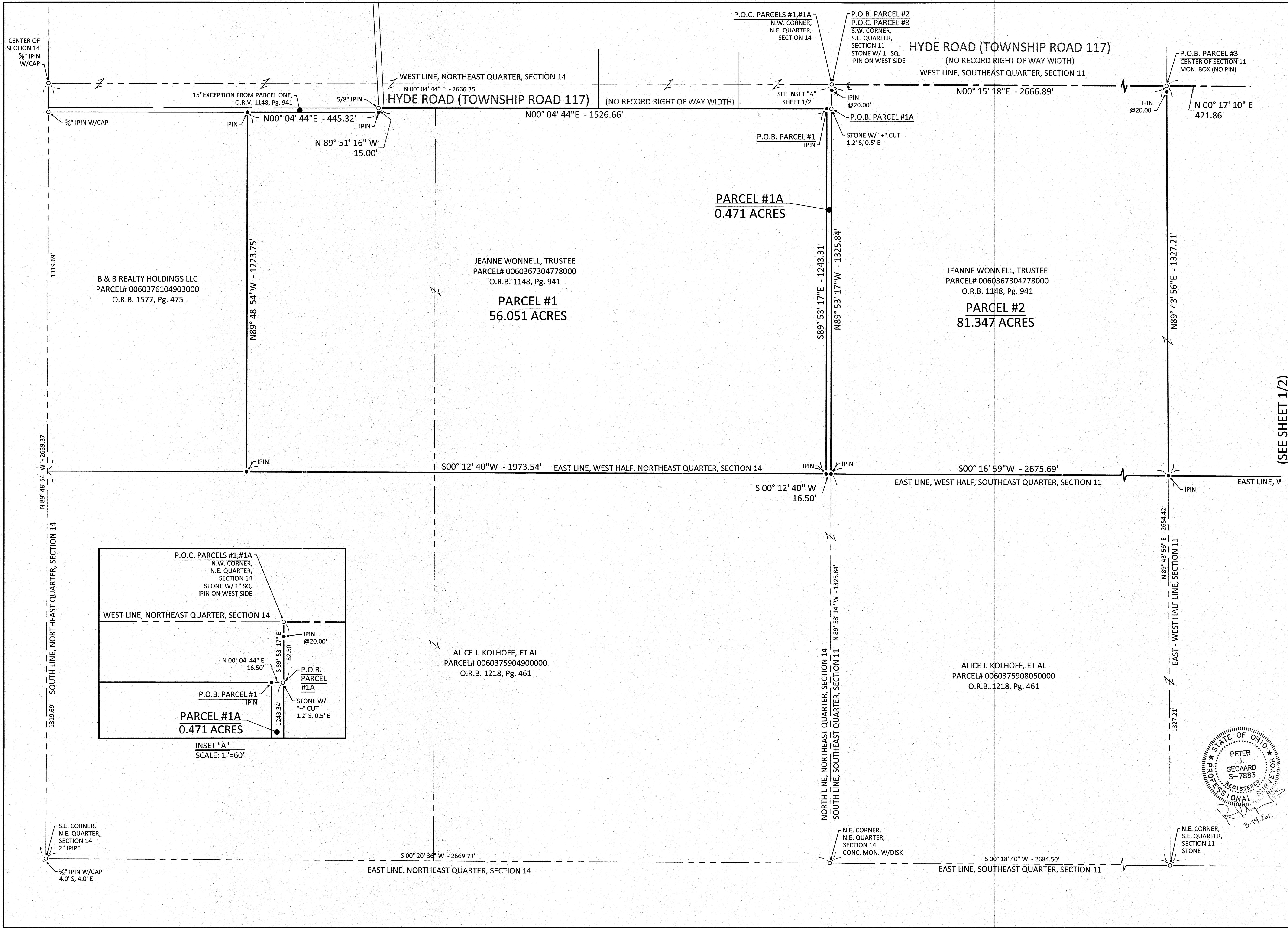
CERTIFICATION:
 I HEREBY CERTIFY THAT THIS SURVEY SHOWN ON THE ATTACHED PLAT WAS PREPARED FROM AN ON THE GROUND SURVEY MADE UNDER MY SUPERVISION AND THAT IT AND THE INFORMATION, COURSES AND DISTANCES AS SHOWN ARE CORRECT TO THE BEST OF MY KNOWLEDGE.

Peter J. Seggaard
 PETER J. SEGGAARD, P.S.
 OHIO PROFESSIONAL SURVEYOR NO. 7883

1.25.2017
 DATE

PLOTTED: Jan 26, 2017 - 8:34am
 DRAWING: M:\17001 (2017 Boundary Surveys)\Wonnell, Jeanne, task 1 SURVEY Dwg\Wonnell BNDY.dwg: 22x34 (1)
 (SEE SHEET 2/2)

PLOTTED: Mar 14, 2017 - 2:31pm
 Drawing: M:\17001 (2017 Boundary Surveys)\Wonnell, Jeanne, task 1\SURVEY\DWG\Wonnell_BNDY.dwg: 22x34 (2)

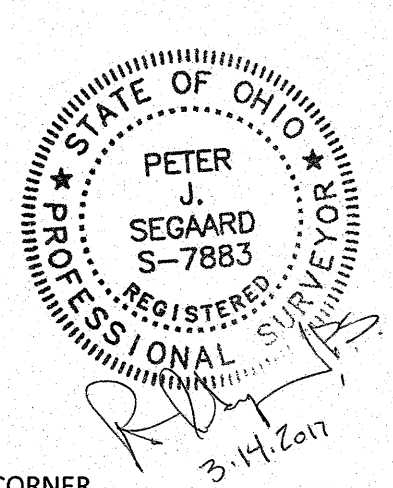


NO	REVISION	DATE
1	ERROR IN DEED FOR 15' EXCEPTION LEAD IN LOCATION REVISED PER COUNTY MARKUP	03/10/17
2		1/25/17
3		
4		
5		
6		
7		
8		
9		

(SEE SHEET 1/2)

DGL CONSULTING ENGINEERS, LLC
 3455 BRIARFIELD BLVD. SUITE E
 MAUMEE, OH 44857
 PHONE: 419-335-1015
 www.dgl-llc.com

FOR:
JEANNE WONNELL, TRUSTEE
 PART OF THE EAST HALF, SECTION 11 AND THE
 NORTHEAST QUARTER OF SECTION 14,
 TOWN 6 NORTH, RANGE 16 EAST, BAY TOWNSHIP,
 OTTAWA COUNTY, OHIO
BOUNDARY SURVEY



FILE:	BNDY
JOB NO.:	17001-1
DRAWN BY:	KEY
ISSUED:	01/20/2017