

# OTTAWA COUNTY ENGINEERS OFFICE

REFERENCE NO. 10-6-16-E  
CENTER POST SECTION 10  
BAY TWP.  
SHEET 1 OF 1.

ROUTE: C-12 DARR-HOPFINGER RD. @  
T-124 SCHAU RD.

TOWNSHIP: BAY

SECTION: 10

T 6 NR 16 E.

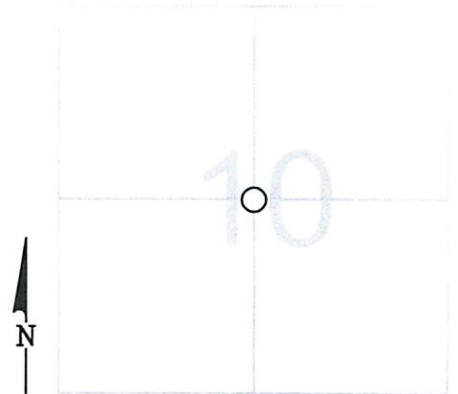
PERSONNEL:  
M. WITTMAN, P.S.  
M. BROUGH

NORTHING:

EASTING:

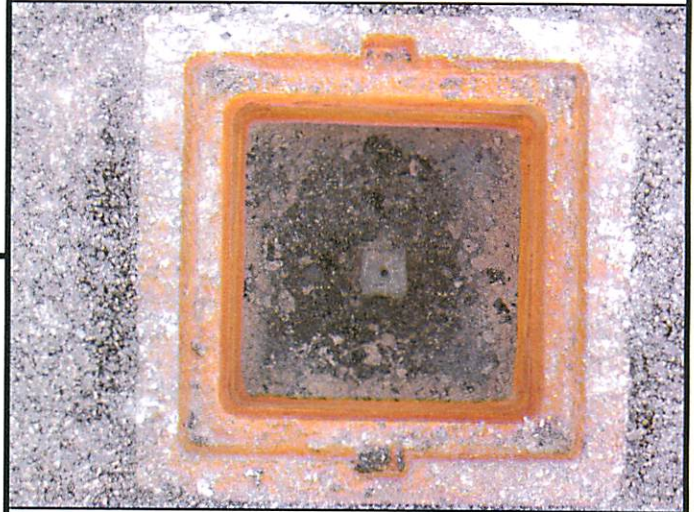
DATE / WEATHER / TEMP:  
AUGUST 17, 2004  
SUNNY SW  
78° F

DATUM:



## MONUMENT INFORMATION

MONUMENT TYPE: FD 1" SQ. IRON PIN  
ON SURFACE - BELOW: 0.79'  
LEFT - CL PAV'T - RIGHT: 1.00'



## MISC. INFORMATION

8-4-09 - M. WITTMAN, P.S., J. ALLEN, C. MILLER, E.  
KOCH SET DRILL HOLE IN CENTER OF PIN.

AUGUST 4, 2009

SET MONUMENT BOX OVER 1"  
SQARE IRON PIN

