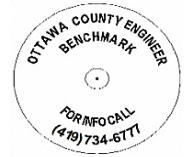


OTTAWA COUNTY BENCHMARK DATA SHEET



BAY 17-3.0

Township	Section	Town	Range	Type of Monument
BAY	9	T6N	R16E	3 1/4" Domed Bronze Disk in Concrete (OCE Spec. BM-1)
Set By	Shot By	Calculated	Calculated By	Published
OCE / OCHD	J. Allen	March 8, 2012	M. J. Wittman, P.S.	March 16, 2012

Location

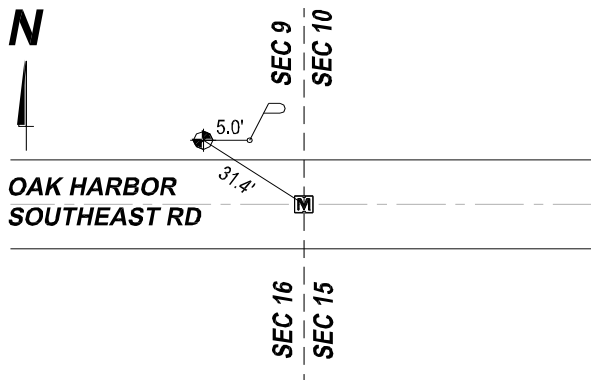
North side of Oak Harbor Southeast Rd., C.R. #17, northwest of the Southeast Corner of Section 9, T6N R16E

Vertical Control

Vertical Datum	Method	Elevation (U.S. Survey Feet)
NAVD 88	GPS	574.98

Horizontal Control

Horizontal Datum	Zone	Northing	Easting
NAD 83 CORS 96	OHIO NORTH 3401	663,495.075	1,828,572.870
Method	Latitude	Longitude	
GPS / CORPSCON	41° 29' 12.06765" N	83° 00' 38.57817" W	
Geoid	Scale Factor	Convergence	
GEOID 09	0.999965833	- 00° 20' 07.85451"	



NOTES:

1. Monument set: August 23, 2011
2. Data Collected: 2-6-12, 2-13-12, 2-28-12