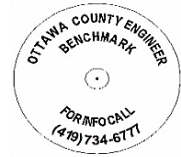


# OTTAWA COUNTY BENCHMARK DATA SHEET



## BAY 12-0.0

<b>Township</b>	<b>Section</b>	<b>Town</b>	<b>Range</b>	<b>Type of Monument</b>
BAY	9	T6N	R16E	3 1/4" Domed Bronze Disk in Concrete (OCE Spec. BM-1)
<b>Set By</b>	<b>Shot By</b>	<b>Calculated</b>	<b>Calculated By</b>	<b>Published</b>
OCE / OCHD	J. Allen	March 8, 2012	M. J. Wittman, P.S.	March 16, 2012

### Location

South side of Darr-Hopfinger Rd., C.R. #12 1/4 mile east of Mulchay Rd., T.R. #27

### Vertical Control

<b>Vertical Datum</b>	<b>Method</b>	<b>Elevation (U.S. Survey Feet)</b>
NAVD 88	GPS	575.44

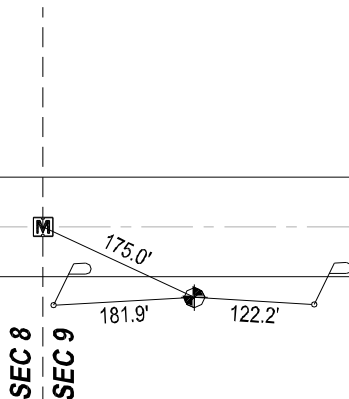
### Horizontal Control

<b>Horizontal Datum</b>	<b>Zone</b>	<b>Northing</b>	<b>Easting</b>
NAD 83 CORS 96	OHIO NORTH 3401	666,084.823	1,823,486.240
<b>Method</b>	<b>Latitude</b>	<b>Longitude</b>	
GPS / CORPSCON	41° 29' 37.35455" N	83° 01' 45.61907" W	
<b>Geoid</b>	<b>Scale Factor</b>	<b>Convergence</b>	
GEOID 09	0.999966736	- 00° 20' 51.89704"	

**N**



**DARR - HOPFINGER  
RD**



**NOTES:**

1. Monument set: August 23, 2011
2. Data Collected: 2-6-12, 2-13-12, 2-28-12