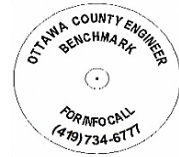




# OTTAWA COUNTY BENCHMARK DATA SHEET



## BAY 113-1.0

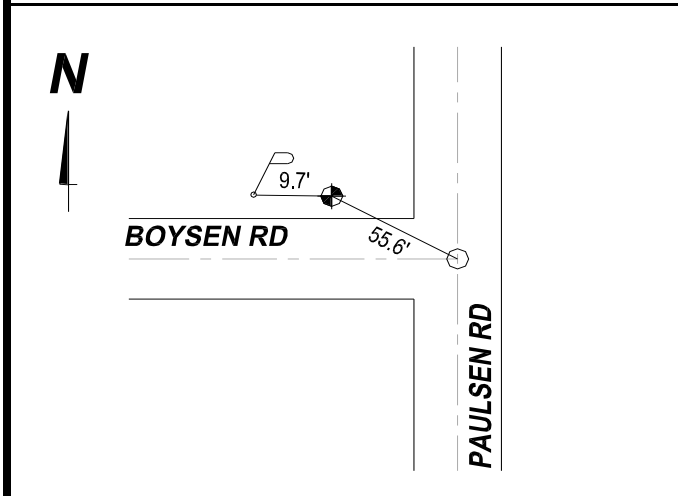
<b>Township</b>	<b>Section</b>	<b>Town</b>	<b>Range</b>	<b>Type of Monument</b>
BAY	19	T6N	R16E	3 1/4" Domed Bronze Disk in Concrete (OCE Spec. BM-1)
<b>Set By</b>	<b>Shot By</b>	<b>Calculated</b>	<b>Calculated By</b>	<b>Published</b>
OCE / OCHD	J. Allen	March 14, 2012	M. J. Wittman, P.S.	March 16, 2012

**Location**

Northwest Corner of the Intersection of Boysen Rd., C.R. #113 & Paulsen Rd., T.R. #114

Vertical Control		
<b>Vertical Datum</b>	<b>Method</b>	<b>Elevation (U.S. Survey Feet)</b>
NAVD 88	GPS	574.83

Horizontal Control			
<b>Horizontal Datum</b>	<b>Zone</b>	<b>Northing</b>	<b>Easting</b>
NAD 83 CORS 96	OHIO NORTH 3401	655,555.571	1,817,891.919
<b>Method</b>	<b>Latitude</b>	<b>Longitude</b>	
GPS / CORPSCON	41° 27' 52.98410" N	83° 02' 58.26008" W	
<b>Geoid</b>	<b>Scale Factor</b>	<b>Convergence</b>	
GEOID 09	0.999963104	- 00° 21' 39.61858"	



**NOTES:**

1. Monument set: August 23, 2011
2. Data Collected: 2-6-12, 2-13-12, 3-9-12