

# OTTAWA COUNTY ENGINEERS OFFICE

REFERENCE NO. 9-7-13-H  
 SOUTH QUARTER POST SEC. 9  
 ALLEN TWP.  
 SHEET 1 OF 1.

ROUTE: C-59 BOLANDER RD.  
 @ T-67 TROWBRIDGE RD.

TOWNSHIP: ALLEN

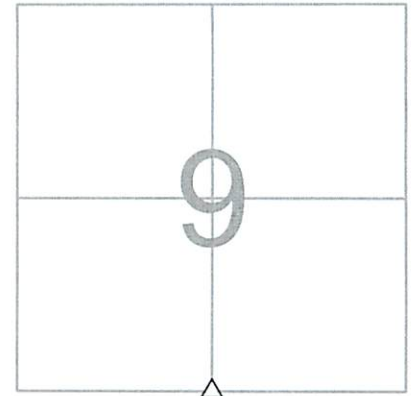
SECTION: 9

T 7 NR 13 E.

NORTHING:

EASTING:

DATUM:



PERSONNEL:  
 M. WITTMAN, P.S.  
 J. ALLEN  
 V. SZABO

DATE / WEATHER / TEMP:  
 MAY 3, 2017  
 SUNNY - N  
 60° F

### MONUMENT INFORMATION

MONUMENT TYPE: FD. 8" X 2-1/2" LIMESTONE  
 ON SURFACE - BELOW: 1.20'  
 LEFT - CL PAV'T - RIGHT: BOLANDER RD.  
 LEFT - CL PAV'T - RIGHT: 11.0' (TROWBRIDGE RD.)

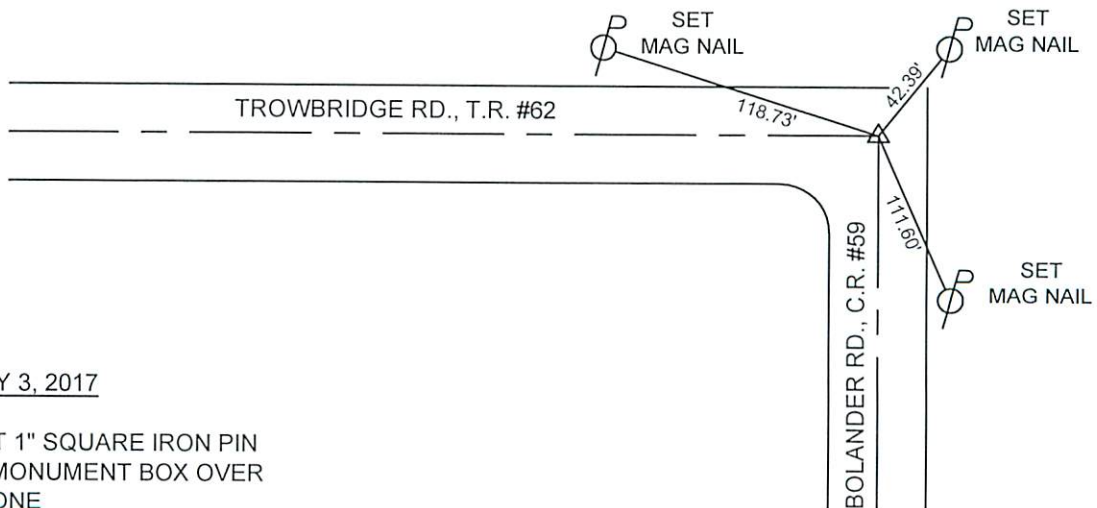
STONE IS 8" E/W AND 2-1/2" N/S

USED CENTER OF STONE.



### MISC. INFORMATION

4-18-17 - MW, JA - FD. HARROW TOOTH 0.10' BELOW SURFACE, TIED W/ GPS AND DUG FOR MONUMENT BOX PER ROAD PLAN. FOUND A STONE 1.15' BELOW SURFACE. FILLED HOLE AND RESET HARROW TOOTH. ALSO FD. AN EMPTY MONUMENT BOX 9.12' NORTH OF STONE. MEASURED 2668.76' FROM CENTER POST OF SECTION 16 TO STONE. RECORD DISTANCE PER STONE BOOK AND ROAD PLANS IS 2669'. STONE BOOK MAKES NOTE THAT "B" IS 9.1' NORTH OF CORRECT STONE. PER RECORDS, STONE IS CORRECT POINT AND AN IRON PIN IN MONUMENT BOX WAS SET OVER THE STONE ON MAY 3, 2017.



MAY 3, 2017

SET 1" SQUARE IRON PIN  
 IN MONUMENT BOX OVER  
 STONE