

OTTAWA COUNTY ENGINEERS OFFICE

REFERENCE NO. 8-7-13-A
NW CORNER POST SEC. 8
ALLEN TWP.
SHEET 1 OF 1.

PERSONNEL:
M. WITTMAN, P.S.
J. ALLEN

DATE / WEATHER / TEMP:
JUNE 24, 2013
SUNNY - S/SW
84° F

ROUTE: C-68 WALBRIDGE EAST RD.
@ T- 54 BILLMAN RD.

TOWNSHIP: ALLEN

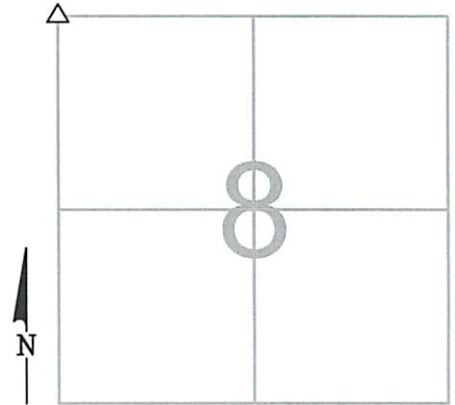
SECTION: 8

T 7 **NR** 13 **E.**

NORTHING:

EASTING:

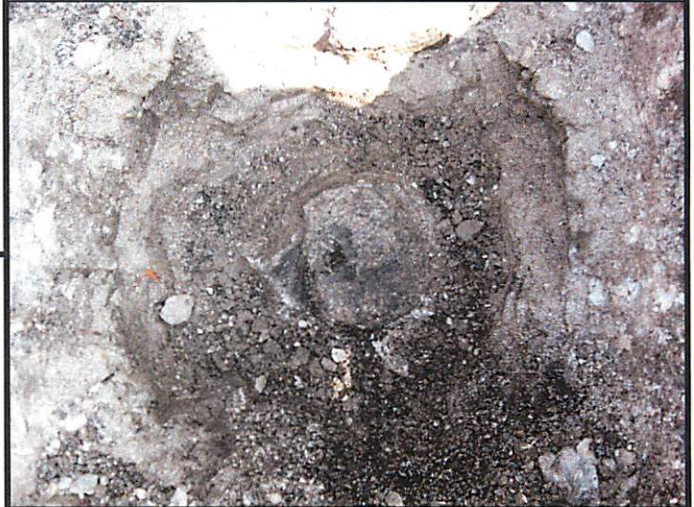
DATUM:



MONUMENT INFORMATION

MONUMENT TYPE: 8" x 10" ROUND STONE W/ DH
ON SURFACE - BELOW: 1.54'
LEFT - CL PAV'T - RIGHT: 4.80'

USED DRILL HOLE



MISC. INFORMATION

FD RR SPK 0.17' BELOW SURFACE, TIED W/ X-TIES
AND DUG FOR STONE. RR SPK WAS 0.05' EAST AND
0.04' NORTH OF DH IN STONE.

JUNE 24, 2013

SET 1" SQUARE IRON PIN
IN MONUMENT BOX OVER
STONE

