

# OTTAWA COUNTY ENGINEERS OFFICE

REFERENCE NO. 7-7-13-G  
 SW CORNER POST SEC. 7  
 ALLEN TWP.  
 SHEET 1 OF 1.

ROUTE: C-2 FOSTORIA RD.  
 @ T-67 TROWBRIDGE RD.

TOWNSHIP: ALLEN

SECTION: 7

T 7 NR 13 E.

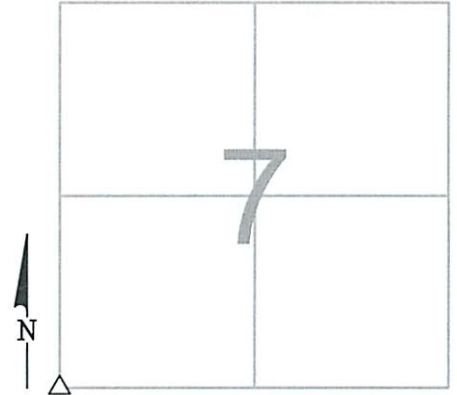
NORTHING:

EASTING:

DATUM:

PERSONNEL:  
 M. WITTMAN, P.S.  
 J. ALLEN  
 J. TIMMONS

DATE / WEATHER / TEMP:  
 JULY 18, 2016  
 OVERCAST  
 77° F - HUMID



### MONUMENT INFORMATION

MONUMENT TYPE: FD. 7" x 10" TRIANGULAR STONE  
 ON SURFACE - BELOW: 1.27'  
LEFT - CL PAV'T - RIGHT: 0.25' (FOSTORIA RD.)  
LEFT - CL PAV'T - RIGHT: 3.80' (TROWBRIDGE RD.)

USED DRILL HOLE FOUND IN STONE.

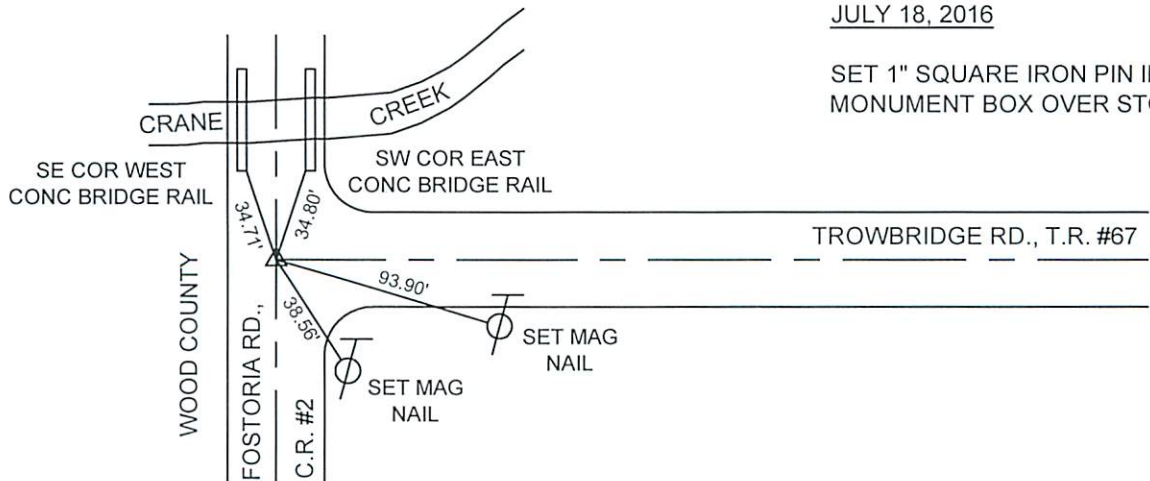


### MISC. INFORMATION

FD. RR SPIKE 0.45' BELOW SURFACE, TIED WITH  
 X-TIES AND DUG FOR STONE.

RR SPIKE WAS 0.06' W AND 0.03' S OF DRILL HOLE IN  
 STONE.

THIS IS A CLOSING CORNER.



JULY 18, 2016

SET 1" SQUARE IRON PIN IN  
 MONUMENT BOX OVER STONE.