

OTTAWA COUNTY ENGINEERS OFFICE

REFERENCE NO. 7-7-13-A
NW CORNER POST SEC. 7
ALLEN TWP.
SHEET 1 OF 1.

ROUTE: C-2 FOSTORIA RD.

TOWNSHIP: ALLEN

SECTION: 7

T 7 N R 13 E.

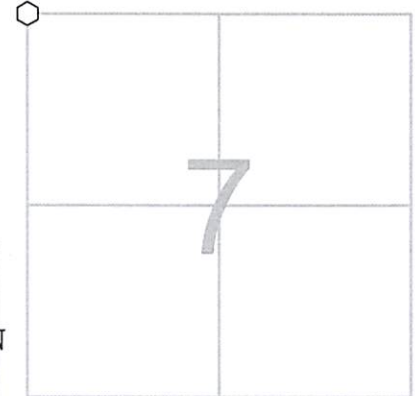
PERSONNEL:

M. WITTMAN, P.S.
J. ALLEN
J. RACE
K. TOMOR

NORTHING:

EASTING:

DATUM:

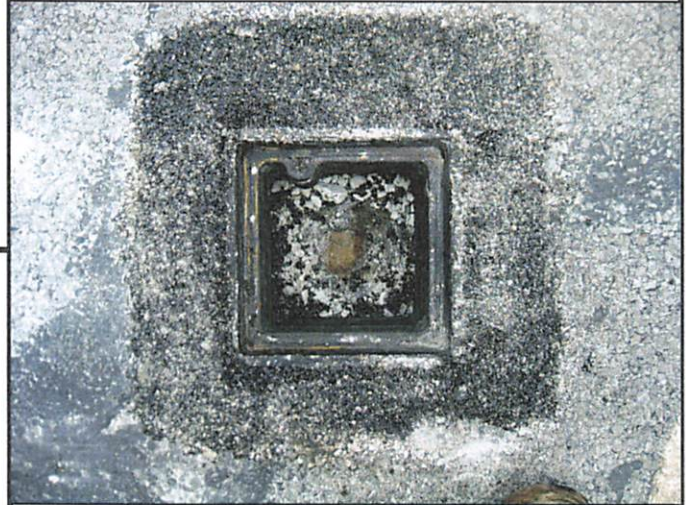


DATE / WEATHER / TEMP:

JUNE 21, 2023
SUNNY - NE
80° F

MONUMENT INFORMATION

MONUMENT TYPE: FD RR SPIKE PER RECORD
ON SURFACE - BELOW: 0.34'
LEFT - CL PAV'T - RIGHT: 2.45'



MISC. INFORMATION

RR SPIKE IS POINT OF RECORD DUE TO POINT
BEING OVER AN EXISTING CROSS-OVER

THIS IS A CLOSING CORNER

JUNE 21, 2023

SET RISERS WITH LID OVER
RR SPIKE

