

OTTAWA COUNTY ENGINEERS OFFICE

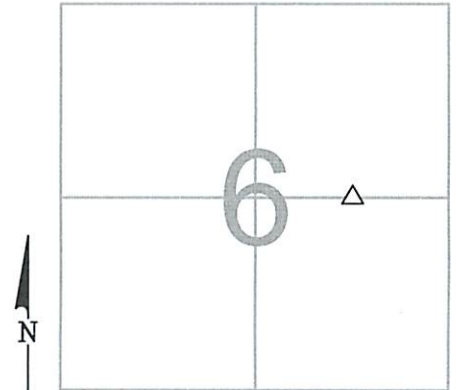
REFERENCE NO. 6-7-13-P
 CENTER EAST 1/16 POST SEC. 6
 ALLEN TWP.
 SHEET 1 OF 1.

ROUTE: T-74 YOUNG RD.
 TOWNSHIP: ALLEN
 SECTION: 6
 T 7 NR 13 E.

PERSONNEL:
 M. WITTMAN, P.S.
 J. ALLEN

NORTHING:
 EASTING:
 DATUM:

DATE / WEATHER / TEMP:
 AUGUST 23, 2018
 SUNNY
 68° F



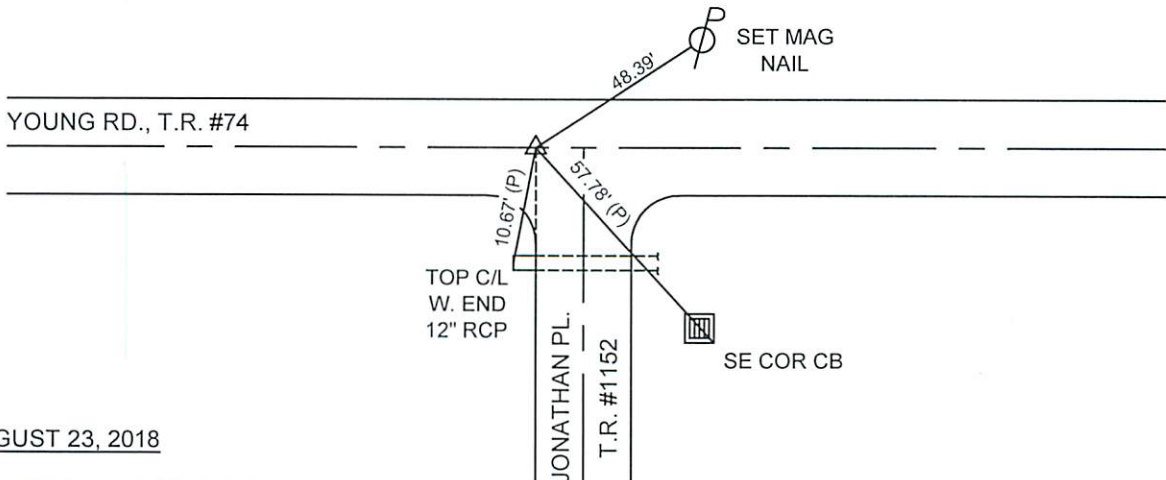
MONUMENT INFORMATION

MONUMENT TYPE: FD. POINTED STONE
 ON SURFACE - BELOW: 0.42'
 LEFT - CL PAV'T - RIGHT: 10.20' - YOUNG ROAD
 LEFT - CL PAV'T - RIGHT: 24.60' - JONATHAN PLACE
 10" x 7" IRREGULAR SHAPED POINTED STONE
 STONE PER 1972 YOUNG ROAD DEDICATION PLAT



MISC. INFORMATION

LOCATION TO DIG DETERMINED BY SURVEY DATA
 FROM 1972 YOUNG ROAD DEDICATION PLAT.
 SET DRILL HOLE IN HIGH POINT ON STONE.
 SET MONUMENT BOX OVER STONE.



AUGUST 23, 2018

SET MONUMENT BOX OVER
 STONE