

OTTAWA COUNTY ENGINEERS OFFICE

REFERENCE NO. 5-7-13-C
NE CORNER POST SECTION 5
ALLEN TWP.
SHEET 1 OF 1.

ROUTE: T-53 REIMAN RD.

TOWNSHIP: ALLEN

SECTION: 5

T 8 NR 13 E.

PERSONNEL:

M. WITTMAN, P.S.
J. ALLEN
J. LAUBACHER

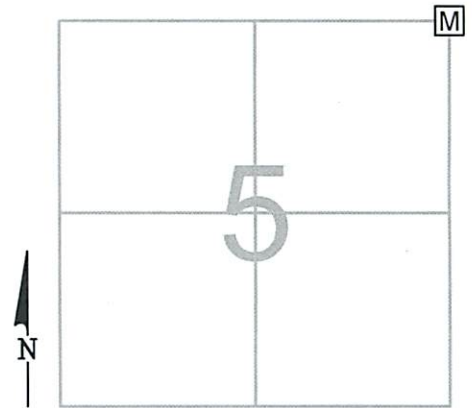
NORTHING:

EASTING:

DATUM:

DATE / WEATHER / TEMP:

AUGUST 4, 2011
OVERCAST - N
80° F



MONUMENT INFORMATION

MONUMENT TYPE: SET 1" SQ. IRON PIN IN MON BOX
ON SURFACE - BELOW:
LEFT - CL PAV'T - RIGHT: 8.25'

PHOTO NOT AVAILABLE

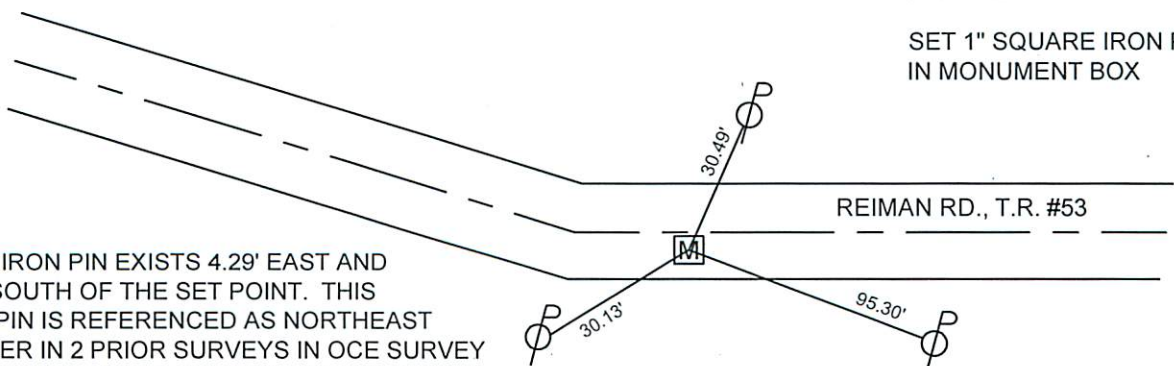
MISC. INFORMATION

CALCULATED POINT BASED ON SURVEYS MADE BY C.E. DEWITT IN 1898 & 1902. HELD ANGLE AND DISTANCE @ E. 1/4 POST PER 1893 SURVEY AND POINT WAS WITHIN 0.19' OF DISTANCE PROVIDED IN 1902 SURVEY. SET TEMP POINT, TIED, AND DUG FOR STONE. NO STONE FOUND. SET 1" SQ. IRON PIN IN MONUMENT BOX AT CALCULATED POINT.

THIS IS A CLOSING CORNER.

AUGUST 4, 2011

SET 1" SQUARE IRON PIN
IN MONUMENT BOX



A 5/8" IRON PIN EXISTS 4.29' EAST AND 0.40' SOUTH OF THE SET POINT. THIS IRON PIN IS REFERENCED AS NORTHEAST CORNER IN 2 PRIOR SURVEYS IN OCE SURVEY FILES DATED 2006 & 2011. CHECK OF IRON PIN SHOWS THE ANGLE AT E 1/4 POST IS 00°06'00" SHORT. CAREFULLY REMOVED IRON PIN AND PRODDED HOLE FOR STONE, NO STONE FOUND, REPLACED PIN FOR REFERENCE.