

OTTAWA COUNTY ENGINEERS OFFICE

REFERENCE NO. 4-7-13-F
E QUARTER POST SECTION 4
ALLEN TWP.
SHEET 1 OF 1.

ROUTE: C-51 GENOA CLAY CENTER RD.

TOWNSHIP: ALLEN

SECTION: 4

T 7 NR 13 E.

PERSONNEL:

M. WITTMAN, P.S.
M. BROUGH
R. LAJTI, JR.
J. VERB

NORTHING:

EASTING:

DATUM:

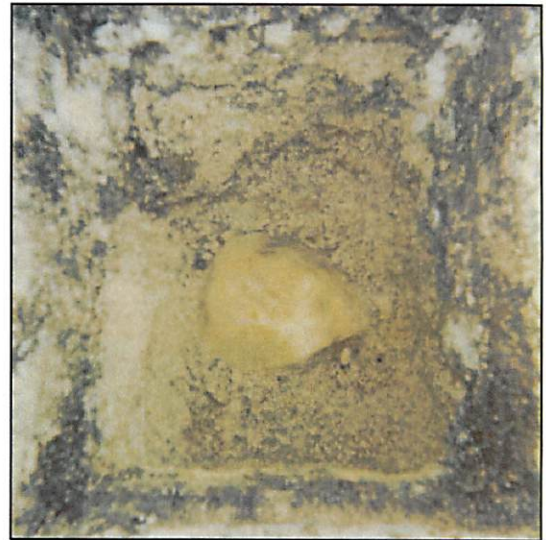


DATE / WEATHER / TEMP:

JUNE 26, 2003
CLDY
70° F

MONUMENT INFORMATION

MONUMENT TYPE: FD STONE W/ DRILL HOLE
ON SURFACE - BELOW: 1.45'
LEFT - CL PAV'T - RIGHT:
TRIANGULAR STONE: 12" x 9 ³/₄"
USED DRILL HOLE

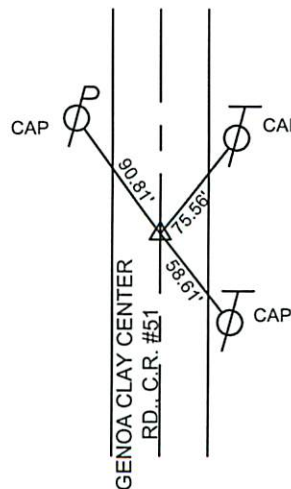


MISC. INFORMATION

STA. 236+74.83 - 1962 C.R. #51 PLANS

JUNE 26, 2003

SET 1" SQUARE IRON PIN
IN MONUMENT BOX OVER
STONE



SHORT TIES

SET MAG NAIL N - 3.00'
SET MAG NAIL E - 3.00'
SET MAG NAIL S - 3.00'

ADDITIONAL LONG TIE

CAP IN 24" TREE E-SE - 26.88'