

OTTAWA COUNTY ENGINEERS OFFICE

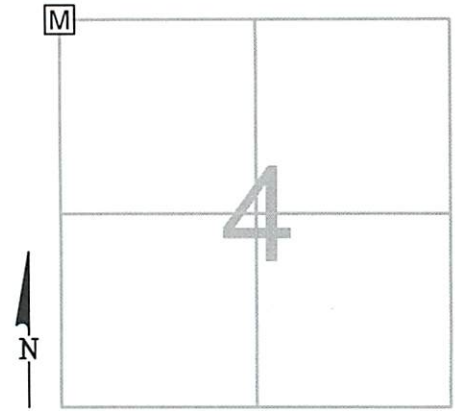
REFERENCE NO. 4-7-13-A
 NW CORNER POST SECTION 4
 ALLEN TWP.
 SHEET 1 OF 1.

ROUTE: T-53 REIMAN RD.
 TOWNSHIP: ALLEN
 SECTION: 4
 T 8 NR 13 E.

PERSONNEL:
 M. WITTMAN, P.S.
 J. ALLEN
 J. LAUBACHER

NORTHING:
 EASTING:
 DATUM:

DATE / WEATHER / TEMP:
 AUGUST 4, 2011
 OVERCAST - N
 80° F



MONUMENT INFORMATION

MONUMENT TYPE: SET 1" SQ. IRON PIN IN MON BOX
 ON SURFACE - BELOW:
 LEFT - CL PAV'T - RIGHT: 8.25'

PHOTO NOT AVAILABLE

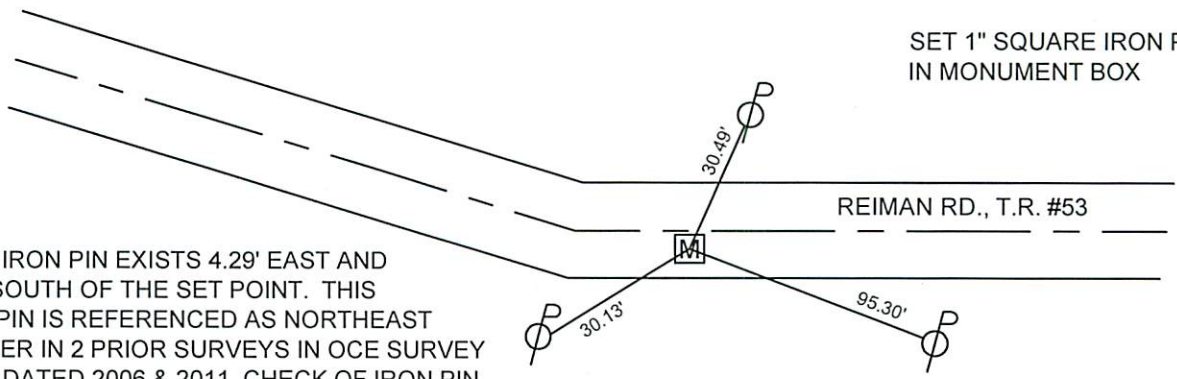
MISC. INFORMATION

CALCULATED POINT BASED ON SURVEYS MADE BY C.E. DEWITT IN 1898 & 1902. HELD ANGLE AND DISTANCE @ E. 1/4 POST PER 1893 SURVEY AND POINT WAS WITHIN 0.19' OF DISTANCE PROVIDED IN 1902 SURVEY. SET TEMP POINT, TIED, AND DUG FOR STONE. NO STONE FOUND. SET 1" SQ. IRON PIN IN MONUMENT BOX AT CALCULATED POINT.

THIS IS A CLOSING CORNER.

AUGUST 4, 2011

SET 1" SQUARE IRON PIN
 IN MONUMENT BOX



A 5/8" IRON PIN EXISTS 4.29' EAST AND 0.40' SOUTH OF THE SET POINT. THIS IRON PIN IS REFERENCED AS NORTHEAST CORNER IN 2 PRIOR SURVEYS IN OCE SURVEY FILES DATED 2006 & 2011. CHECK OF IRON PIN SHOWS THE ANGLE AT E 1/4 POST IS 00°06'00" SHORT. CAREFULLY REMOVED IRON PIN AND PRODDED HOLE FOR STONE, NO STONE FOUND, REPLACED PIN FOR REFERENCE.