

# OTTAWA COUNTY ENGINEERS OFFICE

**REFERENCE NO.** 36-8-13-C  
 NE CORNER POST SECTION 36  
 ALLEN TWP.  
**SHEET** 1 OF 1.

**ROUTE:** C-213 NISSEN RD.  
 @ T-70 CURTICE EAST & WEST RD.

**TOWNSHIP:** ALLEN

**SECTION:** 36

**T** 8 **NR** 13 **E.**

**PERSONNEL:**  
 M. WITTMAN, P.S.  
 J. ALLEN

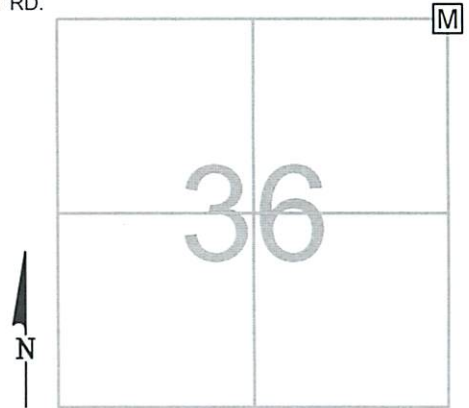
**NORTHING:**

**EASTING:**

**DATUM:**

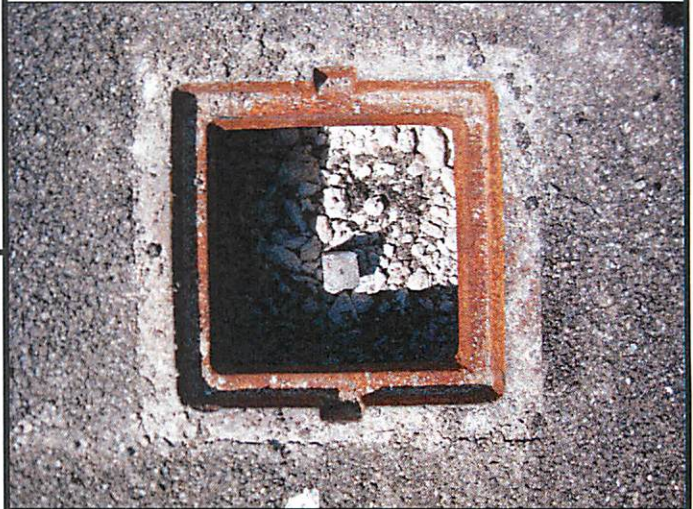
**DATE / WEATHER / TEMP:**

JULY 25, 2014  
 SUNNY  
 77° F



### MONUMENT INFORMATION

**MONUMENT TYPE:** SET 1" SQ. IRON PIN IN MON BOX  
ON SURFACE - BELOW:  
LEFT - CL PAV'T - RIGHT: 8.00'



### MISC. INFORMATION

FD. RR SPK ON SURFACE, TIED W/ GPS AND DUG FOR STONE. FD. LANDSCAPE NAIL 0.11' NORTH AND 0.71' EAST OF RR SPK, LANDSCAPE NAIL WAS LEANING SOUTHEAST. DUG DOWN TO CLAY AND PRODDED ANOTHER 3' DOWN AND DID NOT FIND STONE. USED LOCATION OF RR SPK.

JULY 25, 2014

SET 1" SQUARE IRON PIN  
 IN MONUMENT BOX

