

# OTTAWA COUNTY ENGINEERS OFFICE

REFERENCE NO. 34-8-13-1  
SE CORNER POST SECTION 34  
ALLEN TWP.  
SHEET 1 OF 1.

ROUTE: T-7 MARTIN-WILLISTON RD. @  
S-579.

TOWNSHIP: ALLEN

SECTION: 34

T 8 NR 13 E.

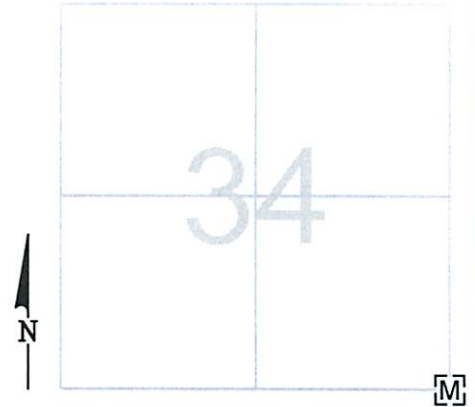
PERSONNEL:  
M. WITTMAN, P.S.  
J. ALLEN

NORTHING:

EASTING:

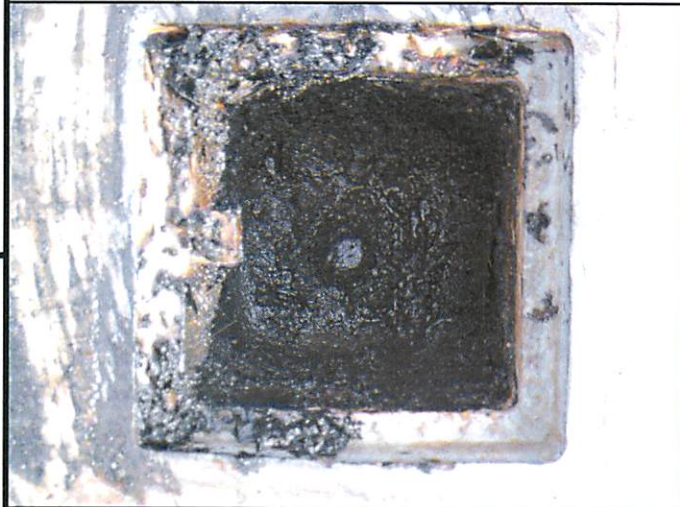
DATUM:

DATE / WEATHER / TEMP:  
AUGUST 20, 2009  
SUNNY HUMID S  
78° F



## MONUMENT INFORMATION

MONUMENT TYPE: FD 3/4" Ø IRON PIN IN MON. BOX  
ON SURFACE - BELOW:  
LEFT - CL PAV'T - RIGHT: 0.17'



## MISC. INFORMATION

