

# OTTAWA COUNTY ENGINEERS OFFICE

REFERENCE NO. 33-8-13-H  
SOUTH QUARTER POST SEC. 33  
ALLEN TWP.  
SHEET 1 OF 1.

ROUTE: C-72 WILDACRE RD.  
@ SR-579

TOWNSHIP: ALLEN

SECTION: 33

T 8 NR 13 E.

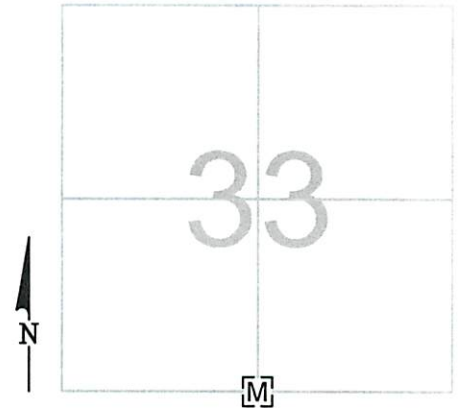
PERSONNEL:  
M. WITTMAN, P.S.  
J. ALLEN  
S. ULLRICH

NORTHING:

EASTING:

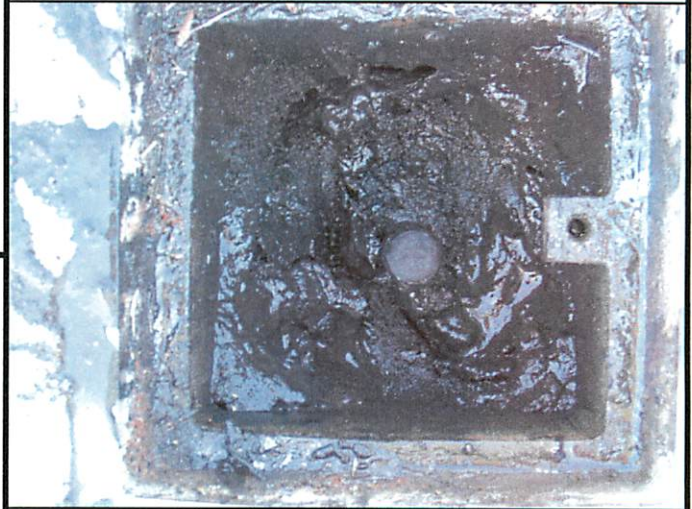
DATUM:

DATE / WEATHER / TEMP:  
AUGUST 26, 2008  
SUNNY E  
74° F



## MONUMENT INFORMATION

MONUMENT TYPE: FD.  $\frac{5}{8}$ "  $\varnothing$  IRON PIN IN  
MONUMENT BOX  
ON SURFACE - BELOW:  
LEFT - CL PAVT - RIGHT:



## MISC. INFORMATION

