

OTTAWA COUNTY ENGINEERS OFFICE

REFERENCE NO. 33-8-13-D
 W QUARTER POST SECTION 33
 ALLEN TWP.
SHEET 1 OF 1.

ROUTE: T-54 REIMAN RD.

TOWNSHIP: ALLEN

SECTION: 33

T 8 **NR** 13 **E.**

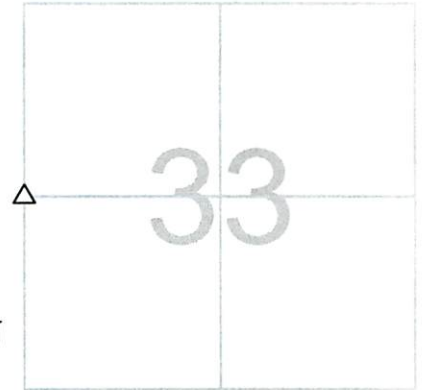
PERSONNEL:

M. WITTMAN, P.S.
 J. ALLEN
 K. SMITH
 S. ULLRICH

NORTHING:

EASTING:

DATUM:



DATE / WEATHER / TEMP:

JULY 30, 2007
 SUNNY N
 77° F

MONUMENT INFORMATION

MONUMENT TYPE: FD STONE
 ON SURFACE - BELOW: 0.95'
LEFT - CL PAV'T - RIGHT: 1'
 POINTED HARDHEAD STONE: 6" x 9"

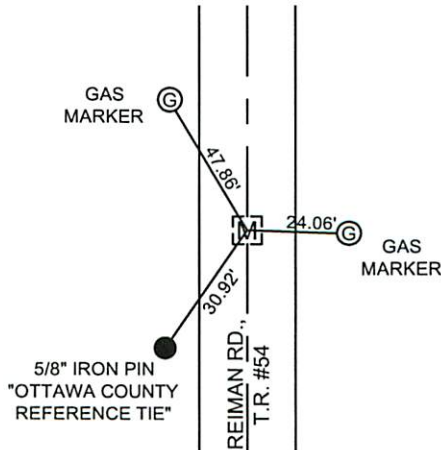
PLACED DRILL HOLE IN POINT PER RCS SURVEY
 DATED 1977



MISC. INFORMATION

JULY 30, 2007

SET 1" SQUARE IRON PIN
 IN MONUMENT BOX OVER
 STONE



USING EXISTING PK'S ALSO
 PK N - 2.02'
 PK S - 2.00'
 PK E - 1.91'