

# OTTAWA COUNTY ENGINEERS OFFICE

REFERENCE NO. 32-8-13-F  
 E QUARTER POST SECTION 32  
 ALLEN TWP.  
 SHEET 1 OF 1.

ROUTE: T-54 REIMAN RD.  
 TOWNSHIP: ALLEN  
 SECTION: 32  
 T 8 NR 13 E.

PERSONNEL:  
 M. WITTMAN, P.S.  
 J. ALLEN  
 K. SMITH  
 S. ULLRICH

NORTHING:  
 EASTING:  
 DATUM:



DATE / WEATHER / TEMP:  
 JULY 30, 2007  
 SUNNY N  
 77° F

### MONUMENT INFORMATION

MONUMENT TYPE: FD STONE  
 ON SURFACE - BELOW: 0.95'  
 LEFT - CL PAV'T - RIGHT: 1'  
 POINTED HARDHEAD STONE: 6" x 9"

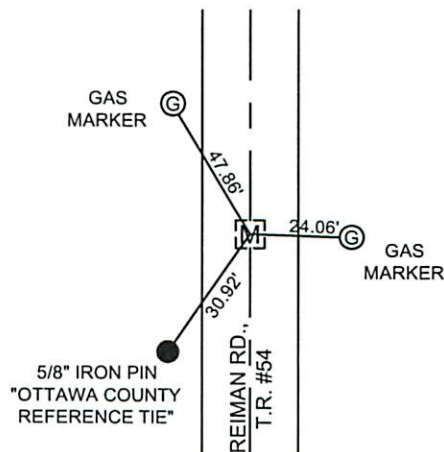
PLACED DRILL HOLE IN POINT PER RCS SURVEY  
 DATED 1977



### MISC. INFORMATION

JULY 30, 2007

SET 1" SQUARE IRON PIN  
 IN MONUMENT BOX OVER  
 STONE



USING EXISTING PK'S ALSO  
 PK N - 2.02'  
 PK S - 2.00'  
 PK E - 1.91'