

OTTAWA COUNTY ENGINEERS OFFICE

REFERENCE NO. 32-8-13-C
 NE CORNER POST SECTION 32
 ALLEN TWP.
SHEET 1 OF 1.

ROUTE: T-70 CURTICE E-W RD. AT
 T-53 REIMAN RD.

TOWNSHIP: ALLEN

SECTION: 32

T 8 **NR** 13 **E.**

NORTHING:

EASTING:

DATUM:



PERSONNEL:
 M. WITTMAN, P.S.
 J. ALLEN
 K. SMITH
 S. ULLRICH

DATE / WEATHER / TEMP:
 JULY 13, 2007
 SUNNY W-NW
 77° F

MONUMENT INFORMATION

MONUMENT TYPE: FD STONE W/ DRILL HOLE
 ON SURFACE - BELOW: 0.61'
 LEFT - CL PAV'T - RIGHT: 2.0'

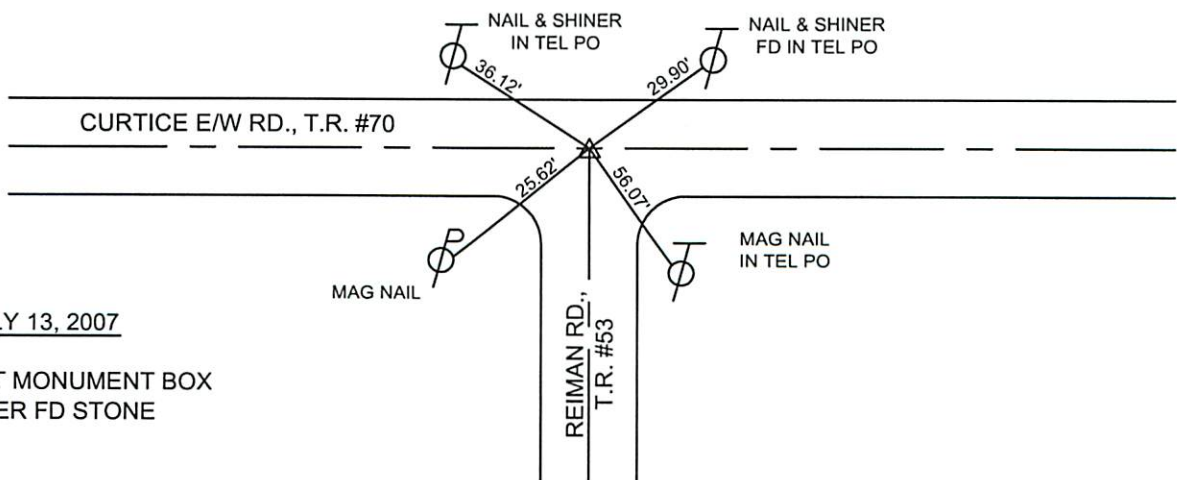
 ROUND TOP GRANITE STONE 7" X 8"



MISC. INFORMATION

STONE TOO SHALLOW FOR A PIN

 ENHANCED DRILL HOLE



JULY 13, 2007
 SET MONUMENT BOX
 OVER FD STONE