

OTTAWA COUNTY ENGINEERS OFFICE

REFERENCE NO. 31-8-13-C
NE CORNER POST SECTION 31
ALLEN TWP.
SHEET 1 OF 1.

ROUTE: T-70 CURTICE E-W RD. AT
T-54 BILLMAN RD.

TOWNSHIP: ALLEN

SECTION: 31

T 8 NR 13 E.

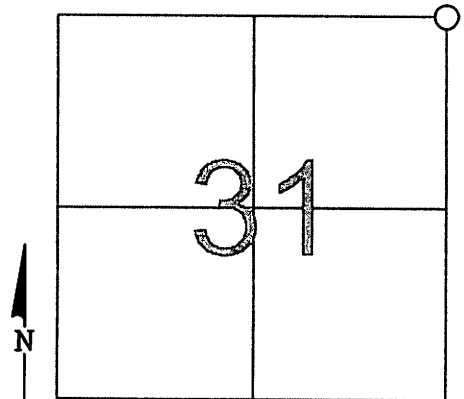
NORTHING:

EASTING:

DATUM:

PERSONNEL:
M. WITTMAN, P.S.
J. ALLEN
K. SMITH
S. ULLRICH

DATE / WEATHER / TEMP:
JULY 13, 2007
SUNNY W-NW
77° F



MONUMENT INFORMATION

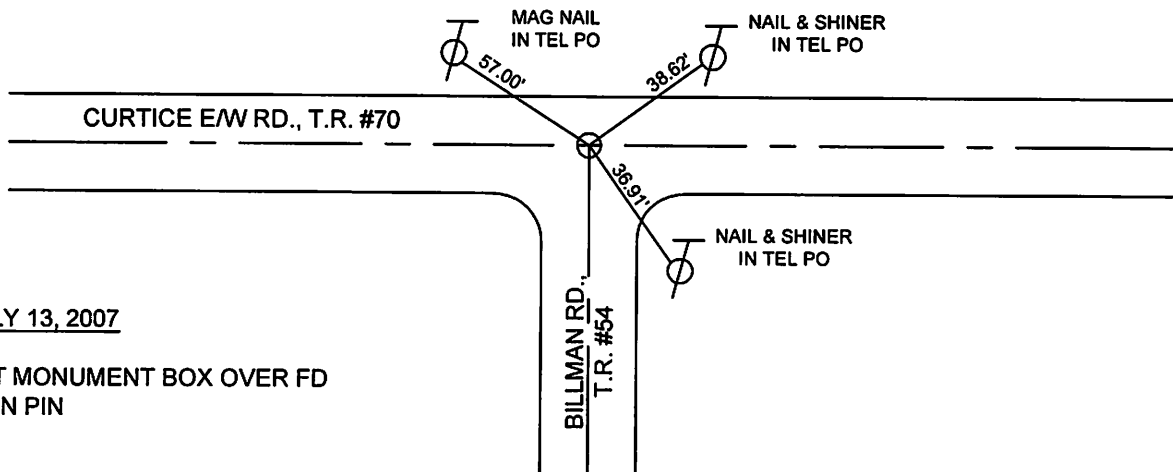
MONUMENT TYPE: FD 3/4" SQ. IRON PIN
ON SURFACE - BELOW: 0.25'
LEFT - CL PAV'T - RIGHT: 6.5'

MISC. INFORMATION

SURVEY BY C.E. DeWITT DATED 4-4-1905 CALLS
FOR A STONE AT THE NW CORNER SECTION 32.

SUBSEQUENT SURVEYS CALL FOR FOUND IRON
PIN, BUT NO RECORD OF WHO SET IT. PIN
FOUND DID HAVE PUNCH MARK, AND WAS
DRIVEN TO RESISTANCE.

PHOTO OF STONE NOT AVAILABLE



JULY 13, 2007

SET MONUMENT BOX OVER FD
IRON PIN