

OTTAWA COUNTY ENGINEERS OFFICE

REFERENCE NO. 3-7-13-G
SW CORNER POST SECTION 3
ALLEN TWP.
SHEET 1 OF 1.

PERSONNEL:
M. WITTMAN, P.S.
M. BROUGH
R. LAJTI, JR.

DATE / WEATHER / TEMP:
JUNE 26, 2003
CLDY
70° F

ROUTE: C-51 GENOA CLAY CENTER RD.
@ T-68 WALBRIDGE EAST RD.

TOWNSHIP: ALLEN

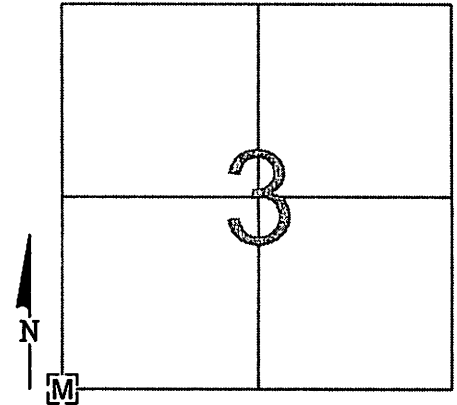
SECTION: 3

T 7 NR 13 E.

NORTHING:

EASTING:

DATUM:



MONUMENT INFORMATION

MONUMENT TYPE: FD 1" SQ. IRON PIN IN MON BOX
ON SURFACE - BELOW:
LEFT - CL PAVT - RIGHT:

MISC. INFORMATION

1" SQ. IRON PIN IN MONUMENT BOX SET 9-14-1971
STATION 210+58.55 - 1962 C.R. #51 PLANS

PHOTO OF STONE NOT AVAILABLE

