

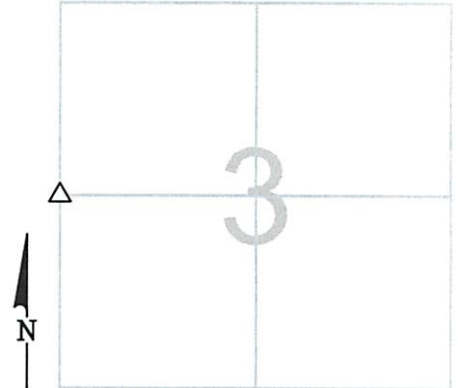
# OTTAWA COUNTY ENGINEERS OFFICE

**REFERENCE NO.** 3-7-13-D  
 W QUARTER POST SECTION 3  
 ALLEN TWP.  
**SHEET** 1 OF 1.

**ROUTE:** C-51 GENOA CLAY CENTER RD.  
**TOWNSHIP:** ALLEN  
**SECTION:** 3  
**T** 7 **N**R 13 **E.**

**PERSONNEL:**  
 M. WITTMAN, P.S.  
 M. BROUGH  
 R. LAJTI, JR.  
 J. VERB

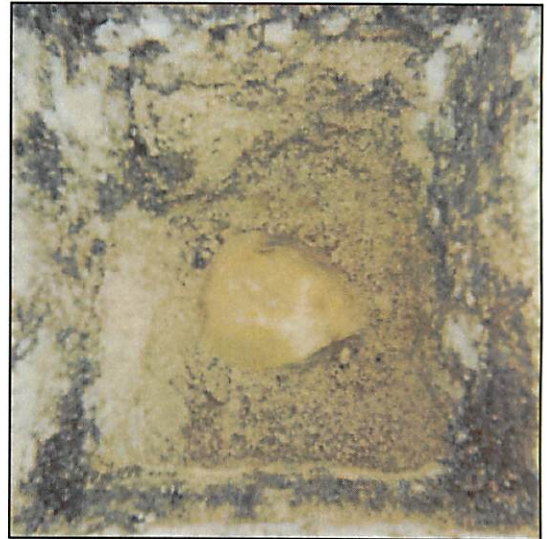
**NORTHING:**  
**EASTING:**  
**DATUM:**



**DATE / WEATHER / TEMP:**  
 JUNE 26, 2003  
 CLDY  
 70° F

### MONUMENT INFORMATION

MONUMENT TYPE: FD STONE W/ DRILL HOLE  
 ON SURFACE - BELOW: 1.45'  
 LEFT - CL PAV'T - RIGHT:  
 TRIANGULAR STONE: 12" x 9 <sup>3</sup>/<sub>4</sub>"  
 USED DRILL HOLE

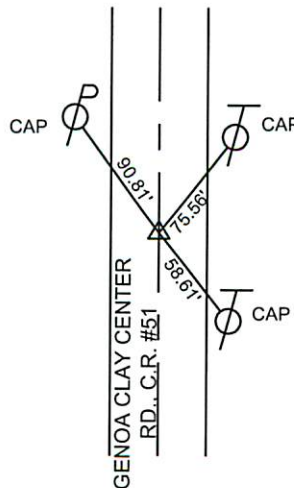


### MISC. INFORMATION

STA. 236+74.83 - 1962 C.R. #51 PLANS

JUNE 26, 2003

SET 1" SQUARE IRON PIN  
 IN MONUMENT BOX OVER  
 STONE



SHORT TIES  
 SET MAG NAIL N - 3.00'  
 SET MAG NAIL E - 3.00'  
 SET MAG NAIL S - 3.00'

ADDITIONAL LONG TIE  
 CAP IN 24" TREE E-SE - 26.88'