

# OTTAWA COUNTY ENGINEERS OFFICE

**REFERENCE NO.** 29-8-13-G  
 SW CORNER POST SECTION 29  
 ALLEN TWP.  
**SHEET** 1 OF 1.

**ROUTE:** T-70 CURTICE E-W RD. AT  
 T-54 BILLMAN RD.

**TOWNSHIP:** ALLEN

**SECTION:** 29

T 8 N R 13 E.

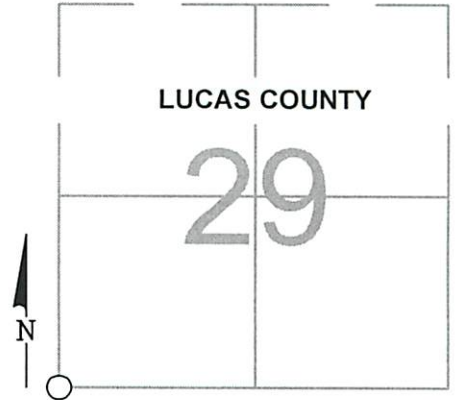
**NORTHING:**

**EASTING:**

**DATUM:**

**PERSONNEL:**  
 M. WITTMAN, P.S.  
 J. ALLEN  
 K. SMITH  
 S. ULLRICH

**DATE / WEATHER / TEMP:**  
 JULY 13, 2007  
 SUNNY W-NW  
 77° F



### MONUMENT INFORMATION

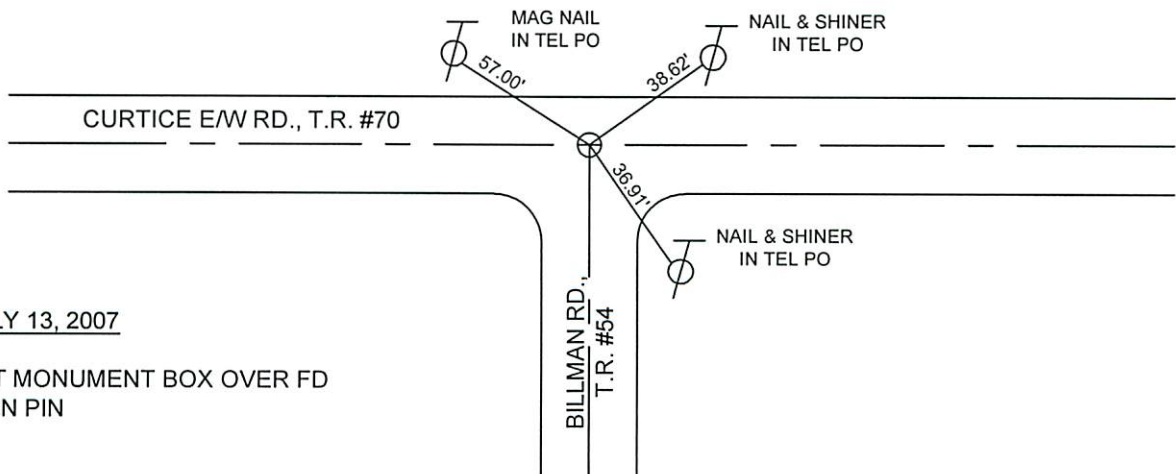
MONUMENT TYPE: FD 3/4" SQ. IRON PIN  
 ON SURFACE - BELOW: 0.25'  
 LEFT - CL PAV'T - RIGHT: 6.5'

### MISC. INFORMATION

SURVEY BY C.E. DeWITT DATED 4-4-1905 CALLS  
 FOR A STONE AT THE NW CORNER SECTION 32.

SUBSEQUENT SURVEYS CALL FOR FOUND IRON  
 PIN, BUT NO RECORD OF WHO SET IT. PIN  
 FOUND DID HAVE PUNCH MARK, AND WAS  
 DRIVEN TO RESISTANCE.

PHOTO OF STONE NOT AVAILABLE



JULY 13, 2007

SET MONUMENT BOX OVER FD  
 IRON PIN