

OTTAWA COUNTY ENGINEERS OFFICE

REFERENCE NO. 28-8-13-1
SE CORNER POST SEC. 28
ALLEN TWP.
SHEET 1 OF 1.

ROUTE: T-51 GENOA-CLAY CENTER RD.
@ T-70 CURTICE E/W RD.

TOWNSHIP: ALLEN

SECTION: 28

T 8 NR 13 E.

NORTHING:

EASTING:

DATUM:



PERSONNEL:
M. WITTMAN, P.S.
J. ALLEN
J. RACE
K. TOMOR

DATE / WEATHER / TEMP:
MAY 31, 2023
SUNNY
73° F

MONUMENT INFORMATION

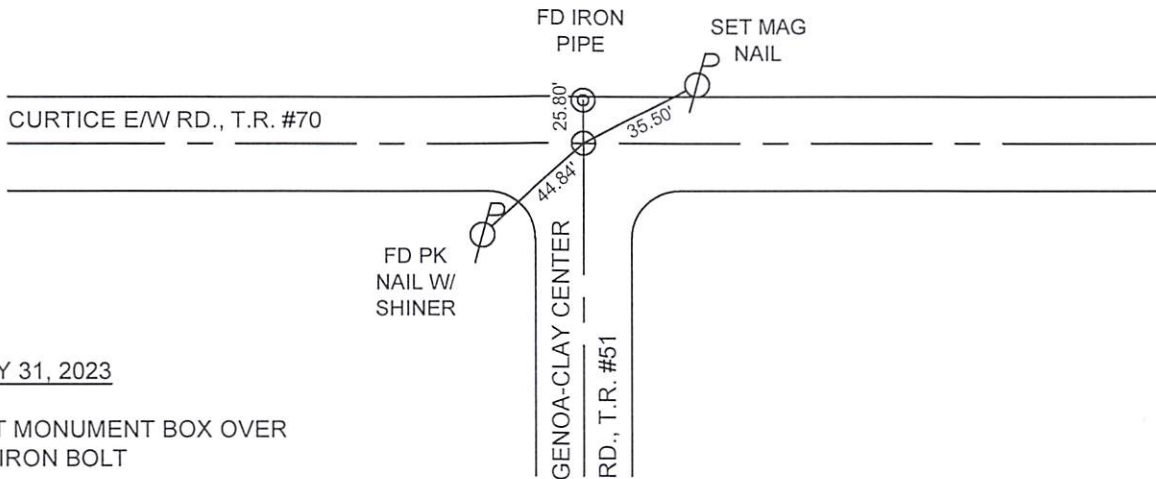
MONUMENT TYPE: FD 1" SQ. HEAD BOLT
ON SURFACE - BELOW: 0.55'
LEFT - CL PAV'T - RIGHT: 7.4' GENOA-CLAY CENTER
LEFT - CL PAV'T - RIGHT: 6.9' CURTICE E/W

IRON BOLT IS MONUMENT OF RECORD



MISC. INFORMATION

FD RAILROAD SPIKE 0.57' BELOW SURFACE, SHOT
WITH GPS AND CONTINUED FOR IRON BOLT.
RAILROAD SPIKE WAS 0.07' EAST AND 0.75' NORTH
OF THE IRON BOLT FOUND.



MAY 31, 2023

SET MONUMENT BOX OVER
FD IRON BOLT