

OTTAWA COUNTY ENGINEERS OFFICE

REFERENCE NO. 25-8-13-C
NE CORNER POST SEC. 25
ALLEN TWP.
SHEET 1 OF 1.

ROUTE: C-213 NISSEN RD.
@ OTTAWA - LUCAS CO. LINE

TOWNSHIP: ALLEN

SECTION: 25

T 8 NR 13 E.

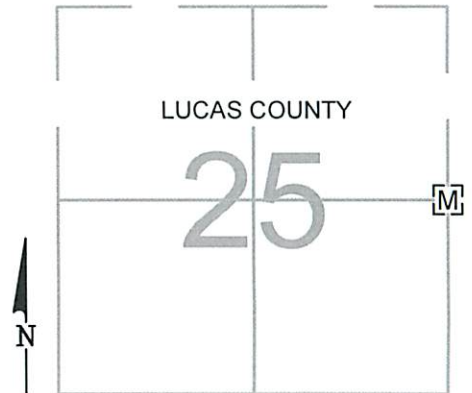
NORTHING:

EASTING:

DATUM:

PERSONNEL:
M. WITTMAN, P.S.
J. ALLEN

DATE / WEATHER / TEMP:
SEPTEMBER 7, 2012
OVERCAST - NW
80° F



MONUMENT INFORMATION

MONUMENT TYPE: FD. STONE IN MON BOX
ON SURFACE - BELOW: 1.13' (STONE)
LEFT - CL PAV'T - RIGHT: 1.25'

POINTED LIMESTONE 7"x5-1/2" WITH DH



MISC. INFORMATION

