

OTTAWA COUNTY ENGINEERS OFFICE

REFERENCE NO. 25-8-13-A
 NW CORNER POST SEC. 25
 ALLEN TWP.
SHEET 1 OF 1.

PERSONNEL:
 M. WITTMAN, P.S.
 J. ALLEN

DATE / WEATHER / TEMP:
 AUGUST 9, 2013
 SUNNY
 74° F

ROUTE: T-214 OPFER-LENTZ RD.

TOWNSHIP: ALLEN

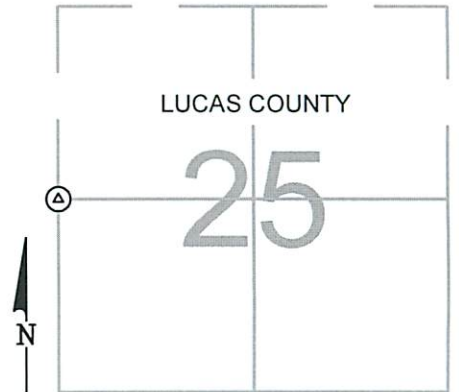
SECTION: 25

T 8 **NR** 13 **E.**

NORTHING:

EASTING:

DATUM:



MONUMENT INFORMATION

MONUMENT TYPE: BRASS DISK IN CONCRETE
 ON SURFACE - BELOW: 1.31'
LEFT - CL PAV'T - RIGHT: 2.50'

3" Ø LUCAS COUNTY ENGINEER BRASS DISK IN
 6" x 6" CONCRETE MONUMENT



MISC. INFORMATION

FD 1-1/2" x 7" SQ. HEAD BOLT W/ PUNCH HOLE 0.33'
 BELOW SURFACE. TIED W/ X-TIES AND DUG FOR
 STONE.

PUNCH HOLE IN BOLT WAS 0.01' WEST OF "X" ON
 DISK.

AUGUST 9, 2013

SET MONUMENT BOX OVER
 BRASS DISK IN CONCRETE

