

# OTTAWA COUNTY ENGINEERS OFFICE

REFERENCE NO. 2-7-13-I  
SE CORNER POST SECTION 2  
ALLEN TWP.  
SHEET 1 OF 1.

ROUTE: T-68 WALBRIDGE EAST RD.  
@ T-214 OPFER LENTZ RD.

TOWNSHIP: ALLEN

SECTION: 2

T 7 NR 13 E.

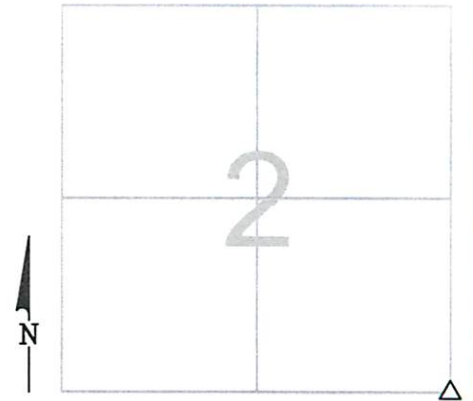
NORTHING:

EASTING:

DATUM:

PERSONNEL:  
M. WITTMAN, P.S.  
J. ALLEN  
K. BECK

DATE / WEATHER / TEMP:  
AUGUST 6, 2010  
SUNNY  
76° F



## MONUMENT INFORMATION

MONUMENT TYPE: FD. 13" x 15-1/2" HARDHEAD  
STONE W/ DRILL HOLE  
ON SURFACE - BELOW: 1.55'  
LEFT - CL PAV'T - RIGHT: 2.90'  
  
USED DRILL HOLE



## MISC. INFORMATION

FD. 3/4" IRON PIPE 0.13' BELOW SURFACE PER D.J.  
NISSEN SURVEY DATED 9-14-1965. TIED WITH  
X-TIES AND DUG FOR STONE. PIPE WAS 0.09' W  
AND 0.04' NORTH OF DRILL HOLE.

AUGUST 6, 2010

SET 1" SQUARE IRON PIN  
IN MONUMENT BOX OVER  
STONE

