

OTTAWA COUNTY ENGINEERS OFFICE

REFERENCE NO. 18-7-13-A
 NW CORNER POST SEC. 18
 ALLEN TWP.
 SHEET 1 OF 1.

ROUTE: C-2 FOSTORIA RD.
 @ T- 67 TROWBRIDGE RD.

TOWNSHIP: ALLEN

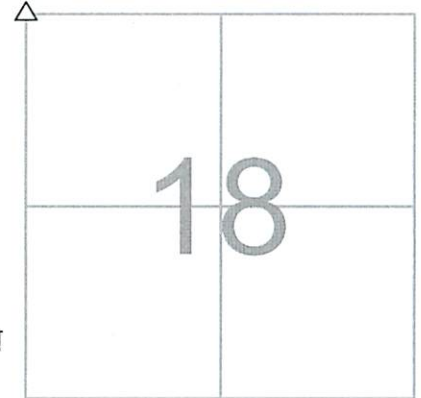
SECTION: 18

T 7 NR 13 E.

NORTHING:

EASTING:

DATUM:



PERSONNEL:
 M. WITTMAN, P.S.
 J. ALLEN
 J. TIMMONS

DATE / WEATHER / TEMP:
 JULY 18, 2016
 OVERCAST
 77° F - HUMID

MONUMENT INFORMATION

MONUMENT TYPE: FD. 7" x 10" TRIANGULAR STONE
 ON SURFACE - BELOW: 1.27'
LEFT - CL PAV'T - RIGHT: 0.25' (FOSTORIA RD.)
LEFT - CL PAV'T - RIGHT: 3.80' (TROWBRIDGE RD.)

USED DRILL HOLE FOUND IN STONE.

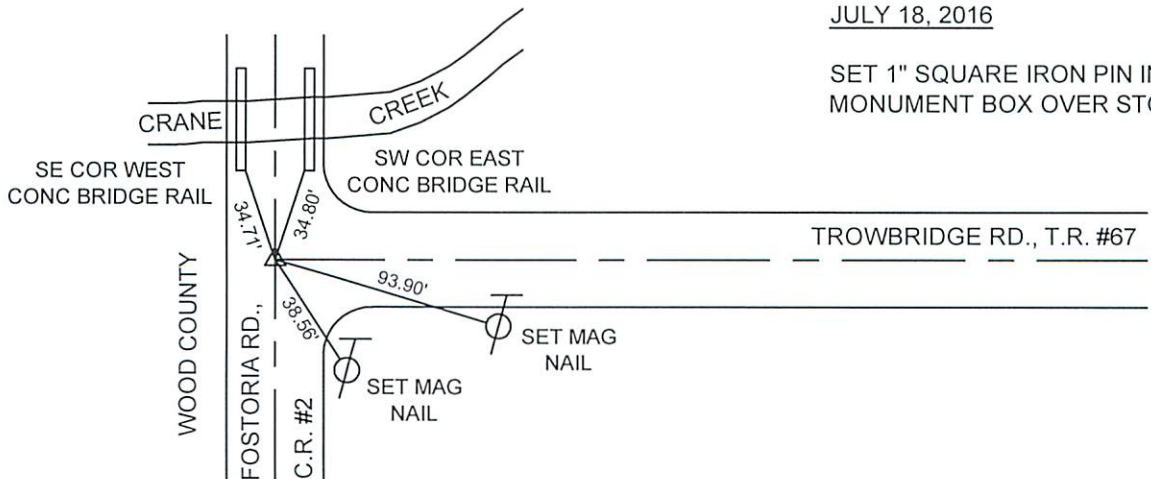


MISC. INFORMATION

FD. RR SPIKE 0.45' BELOW SURFACE, TIED WITH
 X-TIES AND DUG FOR STONE.

RR SPIKE WAS 0.06' W AND 0.03' S OF DRILL HOLE IN
 STONE.

THIS IS A CLOSING CORNER.



JULY 18, 2016

SET 1" SQUARE IRON PIN IN
 MONUMENT BOX OVER STONE.