

OTTAWA COUNTY ENGINEERS OFFICE

REFERENCE NO. 16-7-15-C
 NE CORNER POST SECTION 16
 ALLEN TWP.
SHEET 1 OF 1.

ROUTE: C-51 GENOA CLAY CENTER RD
 @ T-67 TROWBRIDGE RD.

TOWNSHIP: ALLEN

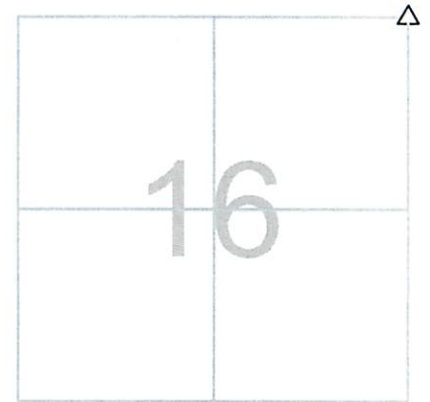
SECTION: 16

T 7 **NR** 13 **E.**

NORTHING:

EASTING:

DATUM:



PERSONNEL:
 R. NUHFER, P.S.
 M. BROUGH
 K. MOORE
 N. SANTOYA
 R. LAJTI

DATE / WEATHER / TEMP:
 AUGUST 7, 2002

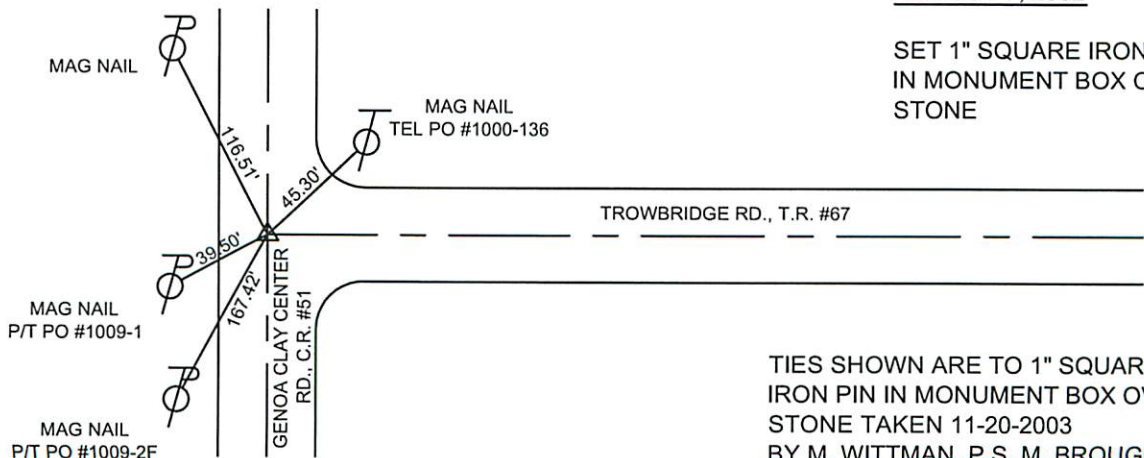
MONUMENT INFORMATION

MONUMENT TYPE: FD LIMESTONE
 ON SURFACE - BELOW: 1.48'
 LEFT - CL PAV'T - RIGHT:
 TRIANGULAR STONE: 11" x 11" x 9" - 7" TALL,
 SURROUNDED BY 6 OTHER LIMESTONES



MISC. INFORMATION

LIMESTONE NE - 9"x7"x7" 1.51' BELOW SURFACE
 LIMESTONE E - 8"x4" 1.59' BELOW SURFACE
 LIMESTONE S - 6"x5" 1.59' BELOW SURFACE
 LIMESTONE SW - 7"x5" 1.65' BELOW SURFACE
 LIMESTONE W - 7"x5" 1.47' BELOW SURFACE
 LIMESTONE NW - 7"x8" 1.47' BELOW SURFACE
 SEE ROAD FILE 8.65 FOR MORE INFORMATIO
 STA. 157+45.60 - 1962 C.R. #51 PLANS



AUGUST 7, 2002

SET 1" SQUARE IRON PIN
 IN MONUMENT BOX OVER
 STONE

TIES SHOWN ARE TO 1" SQUARE
 IRON PIN IN MONUMENT BOX OVER
 STONE TAKEN 11-20-2003
 BY M. WITTMAN, P.S., M. BROUGH
 & R. LAJTI, JR.