

# OTTAWA COUNTY ENGINEERS OFFICE

**REFERENCE NO.** 15-7-15-A  
 NW CORNER POST SECTION 15  
 ALLEN TWP.  
**SHEET** 1 OF 1.

**ROUTE:** C-51 GENOA CLAY CENTER RD  
 @ T-67 TROWBRIDGE RD.  $\Delta$

**TOWNSHIP:** ALLEN

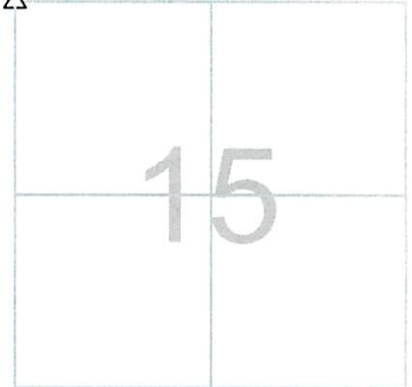
**SECTION:** 15

**T** 7 **N**R 13 **E.**

**NORTHING:**

**EASTING:**

**DATUM:**



**PERSONNEL:**

R. NUHFER, P.S.  
 M. BROUGH  
 K. MOORE  
 N. SANTOYA  
 R. LAJTI

**DATE / WEATHER / TEMP:**

AUGUST 7, 2002

MONUMENT INFORMATION

MONUMENT TYPE: FD LIMESTONE  
 ON SURFACE - BELOW: 1.48'  
 LEFT - CL PAVT - RIGHT:  
 TRIANGULAR STONE: 11" x 11" x 9" - 7" TALL,  
 SURROUNDED BY 6 OTHER LIMESTONES

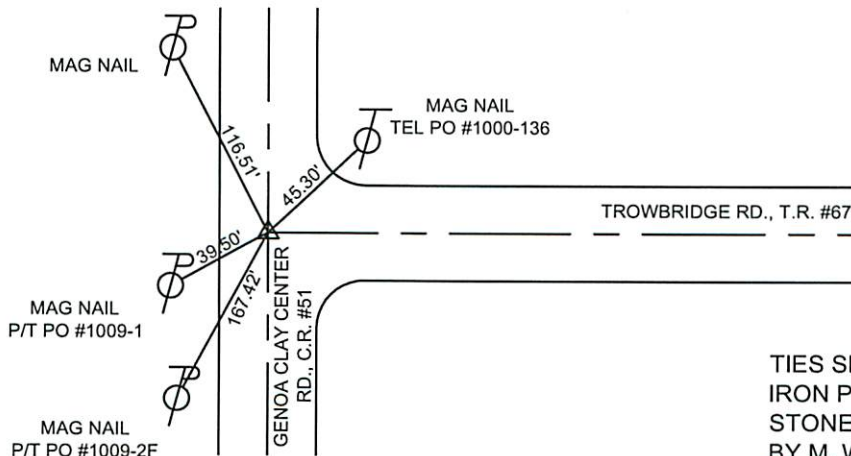


MISC. INFORMATION

LIMESTONE NE - 9"x7"x7" 1.51' BELOW SURFACE  
 LIMESTONE E - 8"x4" 1.59' BELOW SURFACE  
 LIMESTONE S - 6"x5" 1.59' BELOW SURFACE  
 LIMESTONE SW - 7"x5" 1.65' BELOW SURFACE  
 LIMESTONE W - 7"x5" 1.47' BELOW SURFACE  
 LIMESTONE NW - 7"x8" 1.47' BELOW SURFACE  
 SEE ROAD FILE 8.65 FOR MORE INFORMATIO  
 STA. 157+45.60 - 1962 C.R. #51 PLANS

AUGUST 7, 2002

SET 1" SQUARE IRON PIN  
 IN MONUMENT BOX OVER  
 STONE



TIES SHOWN ARE TO 1" SQUARE  
 IRON PIN IN MONUMENT BOX OVER  
 STONE TAKEN 11-20-2003  
 BY M. WITTMAN, P.S, M. BROUGH  
 & R. LAJTI, JR.