

OTTAWA COUNTY ENGINEERS OFFICE

REFERENCE NO. 1-7-13-C
NE CORNER SECTION 1
ALLEN TWP.
SHEET 1 OF 1.

ROUTE: C-213 NISSEN RD.
@ STATE ROUTE #579

TOWNSHIP: ALLEN

SECTION: 1

T 7 NR 13 E.

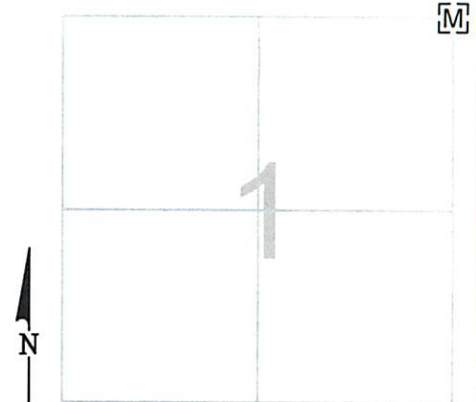
PERSONNEL:
M. WITTMAN, P.S.
J. ALLEN

NORTHING:

EASTING:

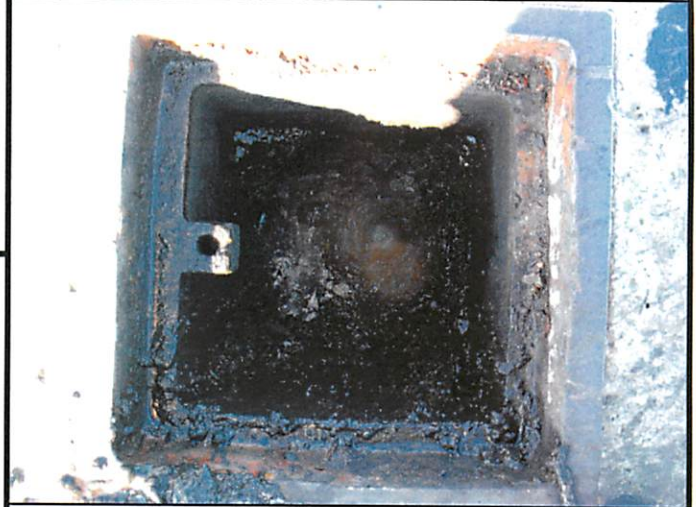
DATUM:

DATE / WEATHER / TEMP:
OCTOBER 14, 2008
SUNNY NW
73° F



MONUMENT INFORMATION

MONUMENT TYPE: FD. $\frac{5}{8}$ " Ø IRON PIN IN
MONUMENT BOX
ON SURFACE - BELOW:
LEFT - CL PAV'T - RIGHT: 3.70'



MISC. INFORMATION

