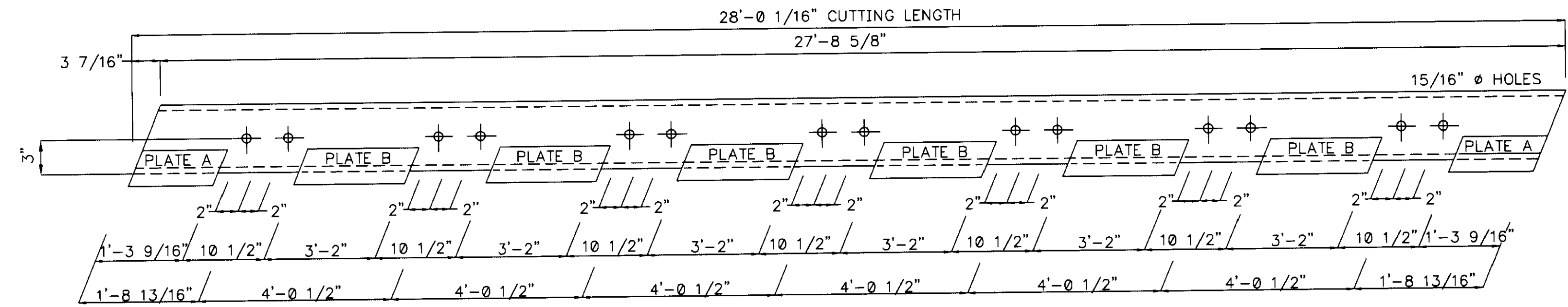
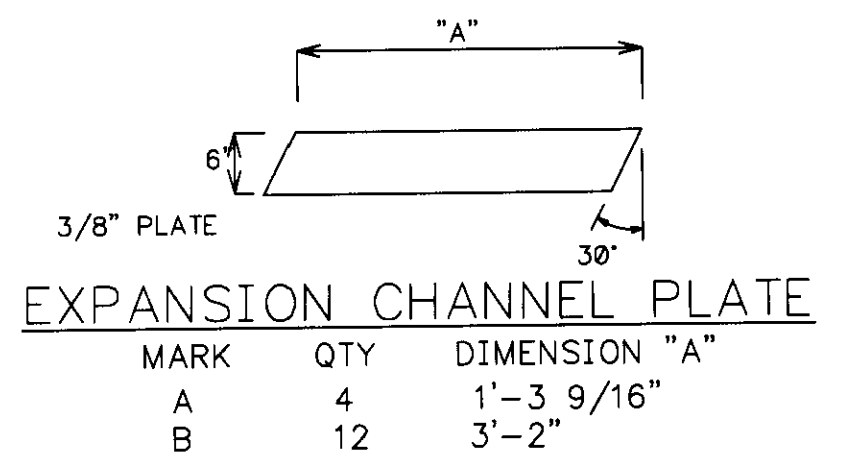


ABUTMENT PLAN VIEW

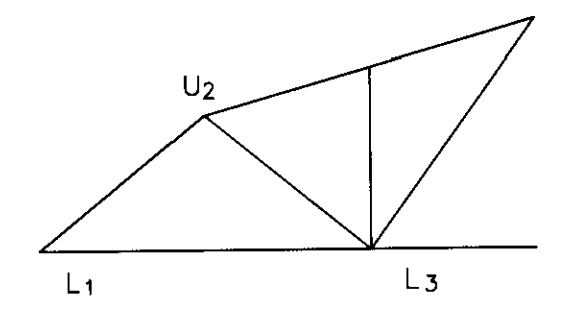


MC6X15.3 - 2 REQ'D

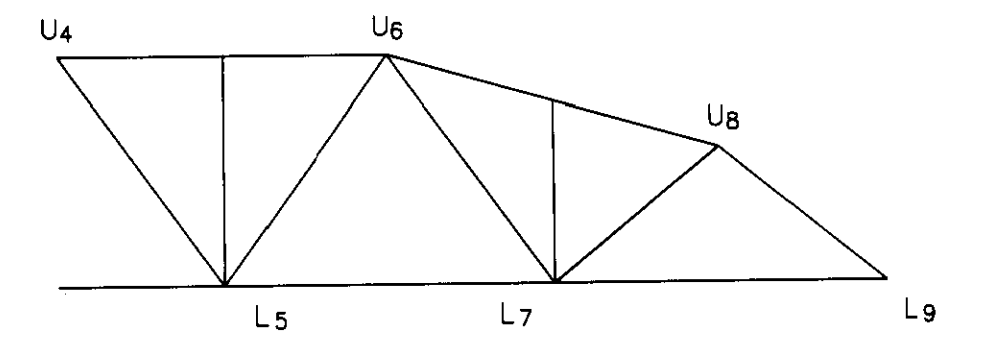


BOLT CHART	BOLT TYPE - 5/8" Ø A307 GALVANIZED		
	LENGTH		
LOCATION	1 1/4"	2"	10"
GR SPLICE BOLTS	112		
TRUSS MT BOLTS		16	
WOOD POSTS			4
TOTAL REQ'D	112	16	4
TOTAL ORDERED	122	20	6

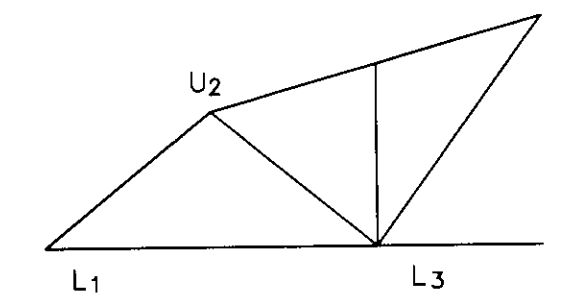
BOLT CHART	BOLT TYPE - 3/4" Ø A325 TYPE 1 GALVANIZED (MECH)		
	LENGTH		
LOCATION	2"	2 1/2"	
FB TO STRINGER			84
KNEE BRACE TO FB.			36
FB TO TRUSS			96
STRINGER TO BRG.	28		
EXP. CH TO STRG.	28		
TOTAL REQ'D	56		216
TOTAL ORDERED	66		226



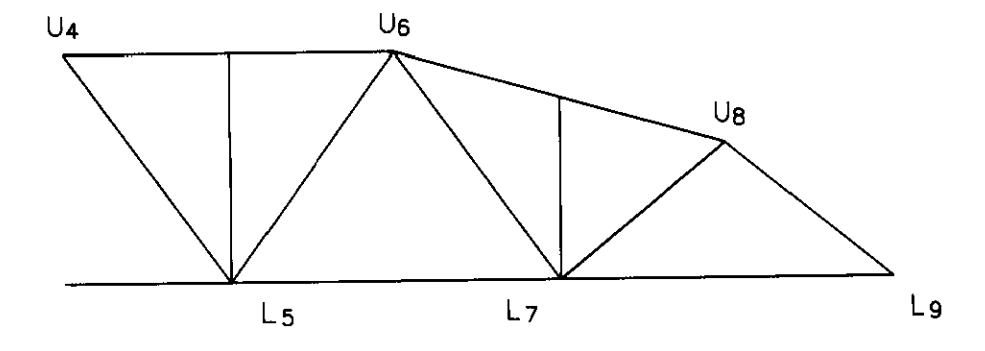
TRUSS SECTION A



TRUSS SECTION B



TRUSS SECTION C



TRUSS SECTION D

TRUSS SECTIONS

NOTE: DRAWINGS RELATIVE DO NOT SCALE

BOLT CHART	BOLT TYPE - 1" Ø A325 TYPE 1 GALVANIZED		
	LENGTH		
LOCATION	2 1/2"	2 3/4"	3 1/2"
L3 - L5		32	40
U4	24	48	
TOTAL REQ'D	24	80	40
TOTAL ORDERED	34	90	50

NO.	DATE	REVISIONS	BY

64'-6" TRUSS REHAB 24' ROADWAY WIDTH WALLBRIDGE EAST ROAD OVER CRANE CREEK ALLEN TWP. OTTAWA COUNTY, OHIO

DESIGN	DRAWN	DATE	DRAWING NO.
DLM	MSB	MAY 23, 2001	64X24

CHECK/DATE	FABRICATOR	SHEET
DLM	OHIO BRIDGE	2 OF 6

MATERIAL SCHEDULE

QUANTITY	QUANTITY
1 PC.	REFURBISHED TRUSS SECTION A
1 PC.	REFURBISHED TRUSS SECTION B
1 PC.	REFURBISHED TRUSS SECTION C
1 PC.	REFURBISHED TRUSS SECTION D
3 PCS	FLOOR BEAMS W27 X 102 @ 30'-10 13/16"
6 PCS	KNEE BRACE ASSEMBLY
2 PCS	LATERAL ROD 1" Ø X 22'-7" W 2 WASHERS & 2 NUTS
2 PCS	LATERAL ROD 1" Ø X 23'-3" W 2 WASHERS & 2 NUTS
2 PCS	LATERAL ROD 1" Ø X 35'-5" W 2 WASHERS & 2 NUTS
2 PCS	LATERAL ROD 1" Ø X 36'-4" W 2 WASHERS & 2 NUTS
2 PCS	STRINGER A - W 12 X 35 @ 16'-1 15/16"
2 PCS	STRINGER B - W 12 X 35 @ 16'-2 15/16"
2 PCS	STRINGER C - W 12 X 35 @ 16'-3 15/16"
2 PCS	STRINGER D - W 12 X 35 @ 16'-4 15/16"
2 PCS	STRINGER E - W 12 X 35 @ 16'-5 15/16"
2 PCS	STRINGER F - W 12 X 35 @ 16'-6 15/16"
2 PCS	STRINGER G - W 12 X 35 @ 16'-7 15/16"
28 PCS	STRINGER H - W 12 X 35 @ 16'-2 1/2"
2 PCS	EXPANSION CHANNEL - MC6X15.3 @ 28'-0 1/16"
14 PCS	STRINGER BEARING PLATE 1/2" X 8" X 20"
4 ASSY.	TRUSS BEARING - 2 FIXED & 2 EXPANSION BEARINGS
8 PCS	TRUSS ANCHOR BOLTS - 1 1/4" Ø X 22"
28 PCS	STRINGER ANCHOR BOLTS - 3/4" Ø X 16"
34 PCS	BRIDGE DECKING 5 GA. 3" X 9" @ 24'-0"
10 PCS	BRIDGE DECKING 5 GA. 3" X 9" DECK SKEW CUT MARKED 1-10
10 PCS	BRIDGE DECKING 5 GA. 3" X 9" DECK SKEW CUT MARKED A-K
9 PCS	EDGE DAM PLATE (GALV.) P 3/16" X 5" X 12'-0"
10 PCS	SPLASH GUARDS P 1/8" X 12" X 48"
2 PCS	OVER ANGLE L 5" X 3 1/2" X 3/8" @ 28'-0"
12 PCS	GALV. GUARD RAIL @ 12'-6"
4 PCS	WOOD POSTS
4 PCS	FLARED ENDS
122 PCS	5/8" Ø X 1 1/4" B,N,& W A307 GALV.
20 PCS	5/8" Ø X 2" B,N,& W A307 GALV.
6 PCS	5/8" Ø X 10" B,N,& W A307 GALV.
66 PCS	3/4" Ø X 2" B,N,& W A325 TYPE 1 GALV.
226 PCS	3/4" Ø X 2 1/2" B,N,& W A325 TYPE 1 GALV.
34 PCS	1" Ø X 2 1/2" B,N,& W A325 TYPE 1 GALV.
90 PCS	1" Ø X 2 3/4" B,N,& W A325 TYPE 1 GALV.
50 PCS	1" Ø X 3 1/2" B,N,& W A325 TYPE 1 GALV.